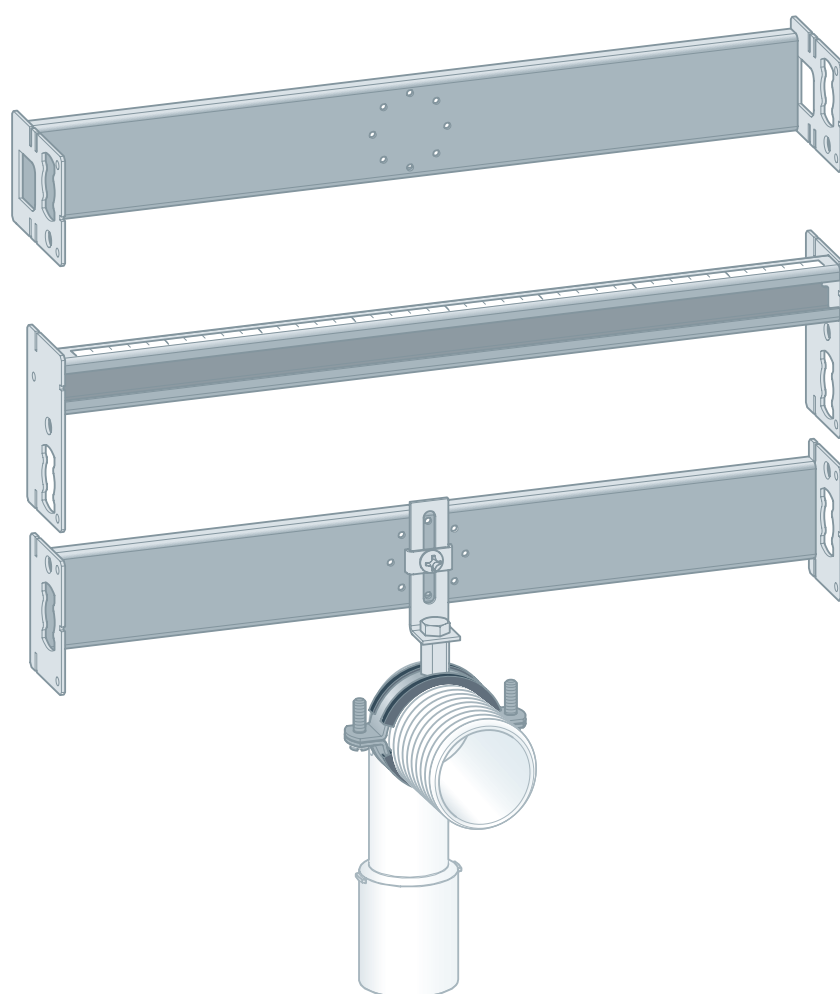


Instructions for Use

Prevista Dry Plus urinal module



for wall-mounted flushing valve

Model
8565

Year built (from)
12/2018

viega

Table of contents

1	About these instructions for use	3
1.1	Target groups	3
1.2	Labelling of notes	3
1.3	About this translated version	4
2	Product information	5
2.1	Intended use	5
2.1.1	Areas of use	5
2.2	Product description	5
2.2.1	Overview	5
2.2.2	Compatible components	6
3	Handling	7
3.1	Assembly information	7
3.1.1	Installation dimensions	7
3.2	Assembly	8
3.2.1	Mounting module	8
3.2.2	Setting up and cladding the module	11
3.3	Disposal	12

1 About these instructions for use

Trade mark rights exist for this document; for further information, go to viega.com/legal.

1.1 Target groups

The information in this instruction manual is directed at the following groups of people:

- Heating and plumbing experts and trained personnel

Individuals without the above-mentioned training or qualifications are not permitted to mount, install or, if appropriate, maintain this product. This restriction does not extend to possible operating instructions.

The installation of Viega products must take place in accordance with the generally accepted rules of engineering and the Viega instructions for use.

1.2 Labelling of notes

Warning and advisory texts are set aside from the remainder of the text and are labelled with the relevant pictographs.



DANGER!

This symbol warns of possible life-threatening injury.



WARNING!

This symbol warns of possible serious injury.



CAUTION!

This symbol warns of possible injury.



NOTICE!

This symbol warns of possible damage to property.



This symbol gives additional information and hints.

1.3 About this translated version

This instruction for use contains important information about the choice of product or system, assembly and commissioning as well as intended use and, if required, maintenance measures. The information about the products, their properties and application technology are based on the current standards in Europe (e.g. EN) and/or in Germany (e.g. DIN/DVGW).

Some passages in the text may refer to technical codes in Europe/Germany. These should serve as recommendations in the absence of corresponding national regulations. The relevant national laws, standards, regulations, directives and other technical provisions take priority over the German/European directives specified in this manual: The information herein is not binding for other countries and regions; as said above, they should be understood as a recommendation.

2 Product information

2.1 Intended use

2.1.1 Areas of use

The Prevista Dry Plus urinal module is designed for mounting in a Prevista Dry Plus pre-wall construction.

2.2 Product description

2.2.1 Overview

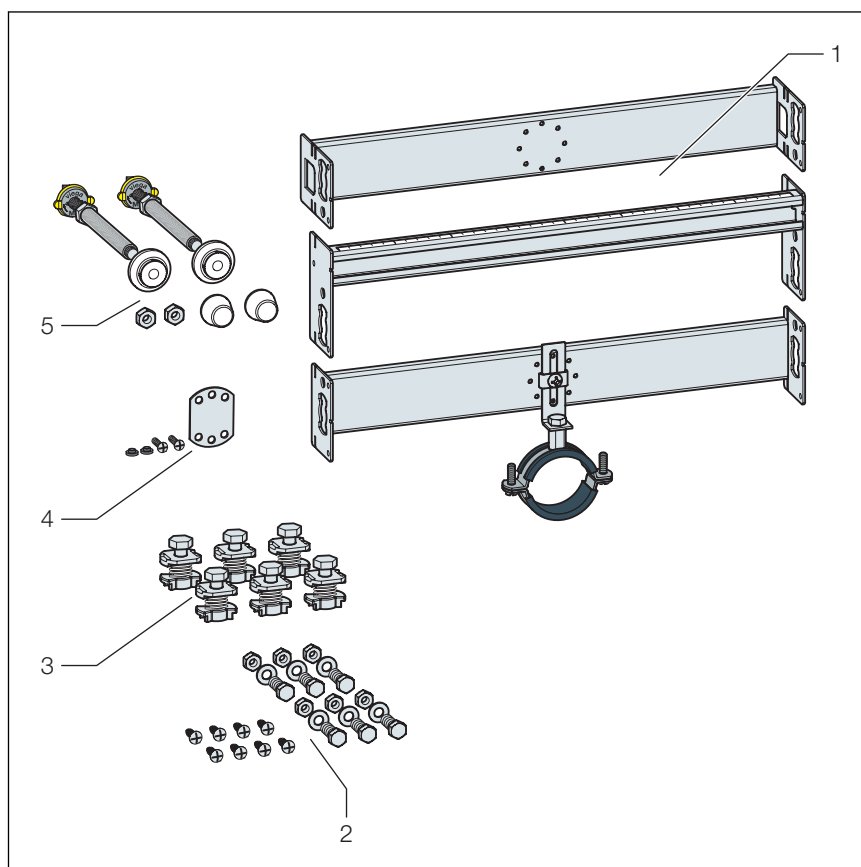


Fig. 1: Components and scope of delivery

- 1 Urinal module
- 2 Screws for fixing in support profile
- 3 slot nuts
- 4 Assembly accessories wall plates
- 5 Threaded rods and protective caps for fixing sanitary objects

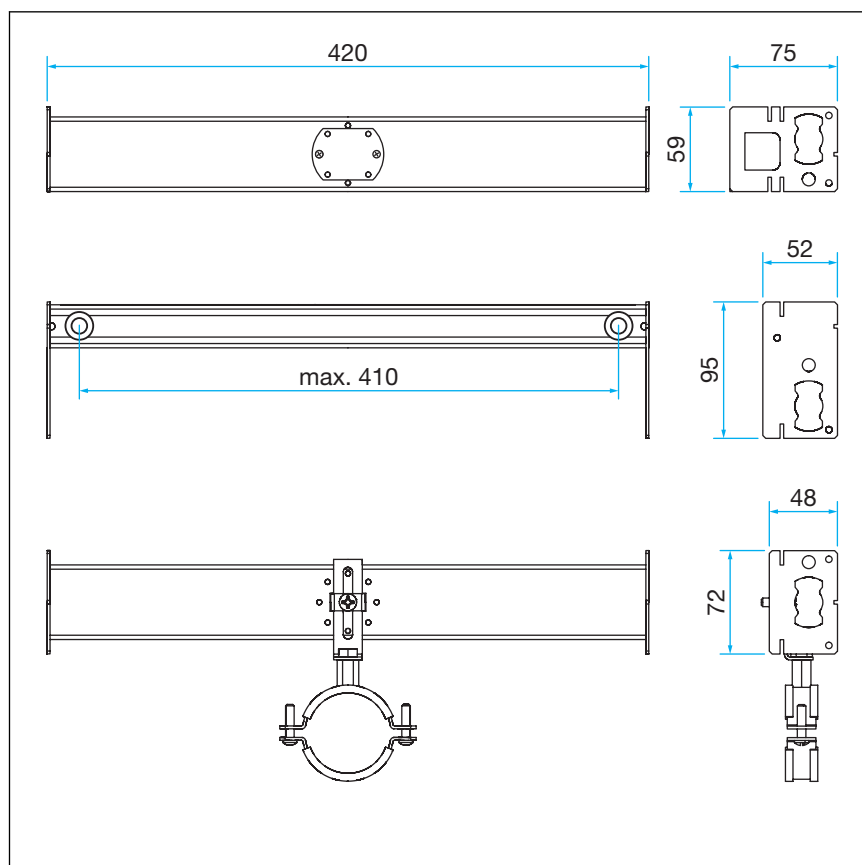
2.2.2 Compatible components

The urinal module is compatible with the ceramics for flush valve.

3 Handling

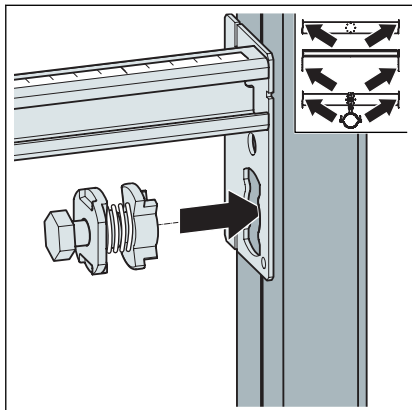
3.1 Assembly information

3.1.1 Installation dimensions



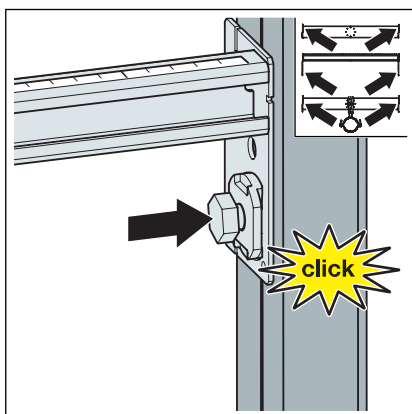
3.2 Assembly

3.2.1 Mounting module

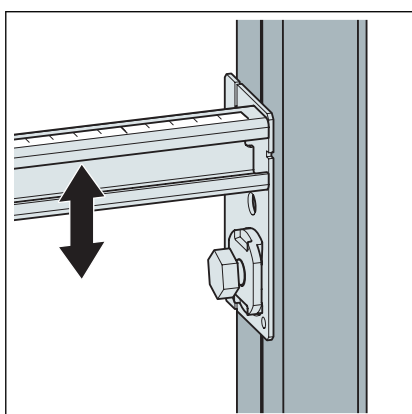


- Secure the module onto the open mounting rail with the slot nuts supplied:

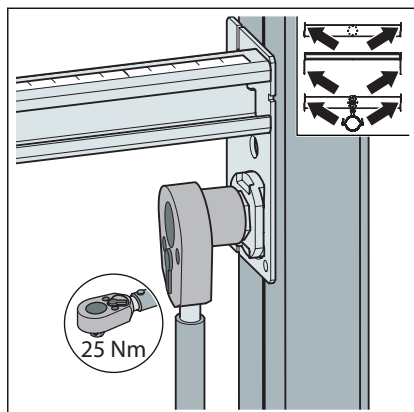
Insert the slot nut into the opening of the module.



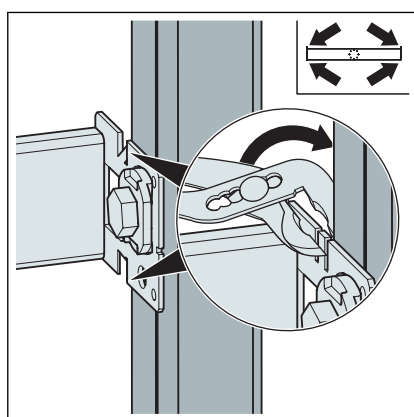
- Push the slot nut in until it engages.



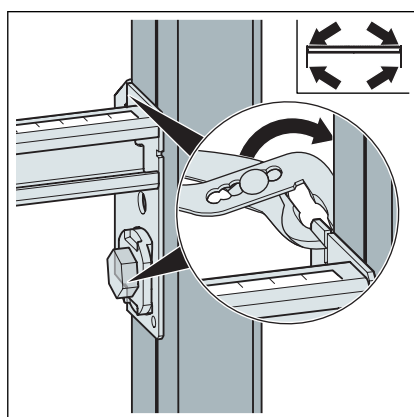
- Set the height of the rails.



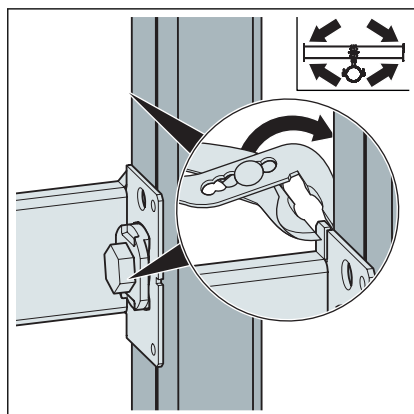
► Fasten the slot nut.



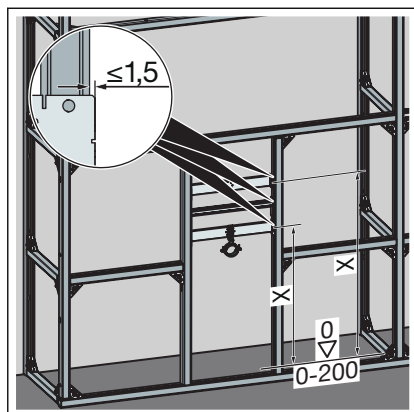
► Bend the sides of the metal bars of the rails.



► Bend the sides of the metal bars of the fitting holder.

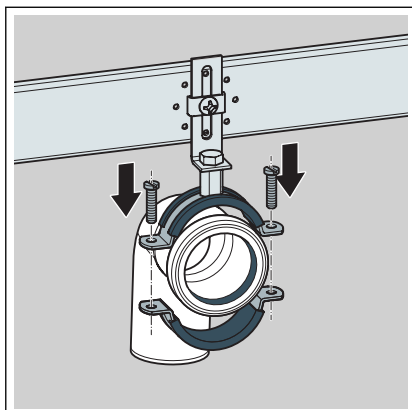


► Bend the sides of the metal bars of the drain elbow.

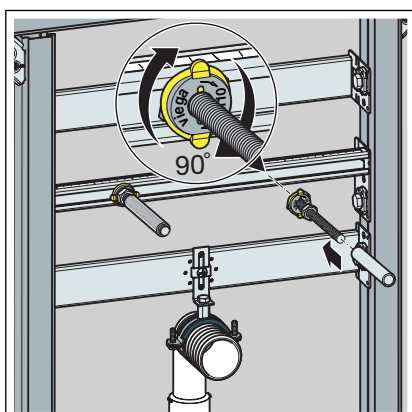


- Set the height of the module according to the ceramic manufacturer's instructions.
- The projection of the carriers beyond the rails is maximum 1.5 mm.

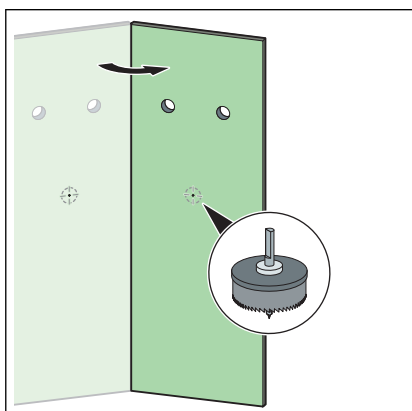
3.2.2 Setting up and cladding the module



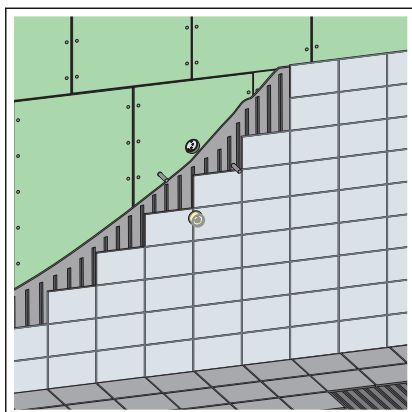
- Mount a drain elbow.



- Turn in the threaded rods by hand.
- Tighten the nuts of the threaded rods with a fork spanner.
- Place the protective caps on the threaded rods.
- Make the water connections.



- Cut out the recesses for the drain elbow and the threaded rods.
- Cut the gypsum cardboard cladding panel to size.



► Clad the module with suitable gypsum cardboard cladding panels.

3.3 Disposal

Separate the product and packaging materials (e. g. paper, metal, plastic or non-ferrous metals) and dispose of in accordance with valid national legal requirements.



Viega GmbH & Co. KG
service-technik@viega.de
viega.com

INT • 2021-06 • VPN210052

