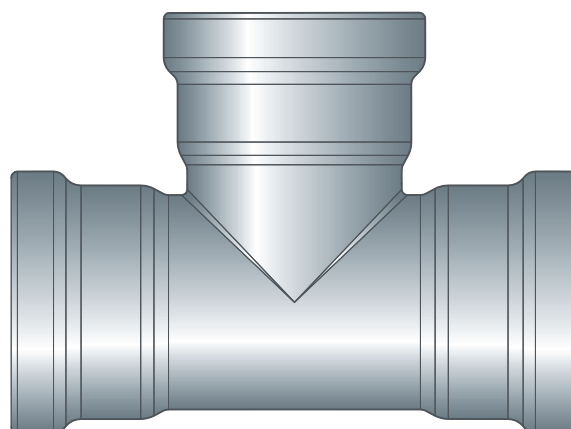
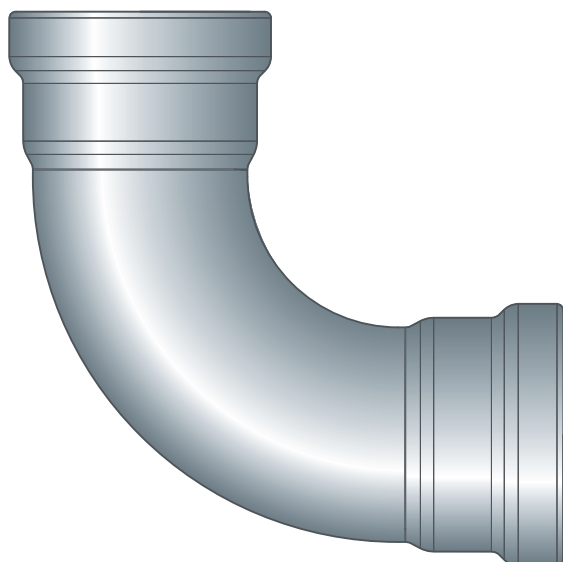
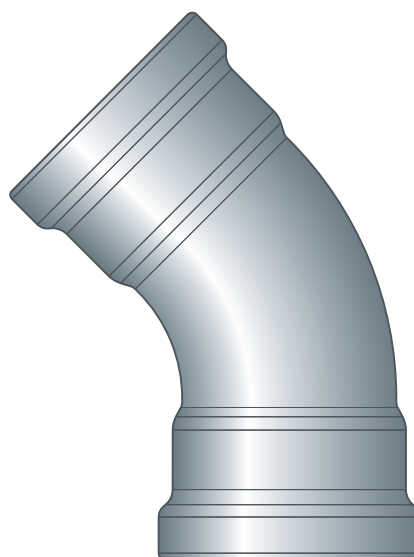
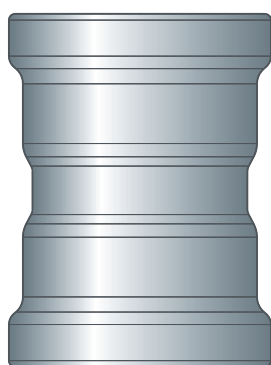


Instructions for Use

Sanpress Inox XL LF



Press connector system made of stainless steel with stainless steel pipes

System
Sanpress Inox XL LF

Year built (from)
01/2010

viega

Table of contents

1	About these instructions for use	3
1.1	Target groups	3
1.2	Labelling of notes	3
1.3	About this translated version	4
2	Product information	5
2.1	Standards and regulations	5
2.2	Intended use	7
2.2.1	Areas of use	7
2.2.2	Media	8
2.3	Product description	8
2.3.1	Overview	8
2.3.2	Pipes	8
2.3.3	Press connectors	12
2.3.4	Sealing elements	12
2.3.5	Markings on components	13
2.3.6	Mixed installations	13
2.4	Information for use	14
2.4.1	Corrosion	14
3	Handling	15
3.1	Transport	15
3.2	Storage	15
3.3	Assembly information	16
3.3.1	Mounting instructions	16
3.3.2	Potential equalisation	16
3.3.3	Space requirements and intervals	16
3.3.4	Required tools	18
3.4	Assembly	19
3.4.1	Shortening the pipes	19
3.4.2	Deburring the pipes	19
3.4.3	Pressing the connection	20
3.4.4	Leakage test	22
3.5	Maintenance	23
3.6	Disposal	23

1 About these instructions for use

Trade mark rights exist for this document; for further information, go to viega.com/legal.

1.1 Target groups

The information in this manual is directed at heating and sanitary professionals and trained personnel.

Individuals without the abovementioned training or qualification are not permitted to mount, install and, if required, maintain this product. This restriction does not extend to possible operating instructions.

The installation of Viega products must take place in accordance with the general rules of engineering and the Viega instructions for use.

1.2 Labelling of notes

Warning and advisory texts are set aside from the remainder of the text and are labelled with the relevant pictographs.



DANGER!

This symbol warns of possible life-threatening injury.



WARNING!

This symbol warns of possible serious injury.



CAUTION!

This symbol warns of possible injury.



NOTICE!

This symbol warns of possible damage to property.



This symbol gives additional information and hints.

1.3 About this translated version

This instruction for use contains important information about the choice of product or system, assembly and commissioning as well as intended use and, if required, maintenance measures. The information about the products, their properties and application technology are based on the current standards in Europe (e.g. EN) and/or in Germany (e.g. DIN/DVGW).

Some passages in the text may refer to technical codes in Europe/Germany. These should serve as recommendations in the absence of corresponding national regulations. The relevant national laws, standards, regulations, directives and other technical provisions take priority over the German/European directives specified in this manual: The information herein is not binding for other countries and regions; as said above, they should be understood as a recommendation.

2 Product information

2.1 Standards and regulations

The following standards and regulations apply to Germany / Europe and are provided as a support feature.

Regulations from section: Intended use

Scope / Notice	Regulations applicable in Germany
Creating potable water installations	DIN 1988-200
Creating potable water installations	EN 806-2
Regulation on material selection	DIN 50930-6
Regulation on material selection	DIN EN 12502-1

Regulations from section: Fields of application

Scope / Notice	Regulations applicable in Germany
Planning, setup, operation and maintenance of fire extinguishing systems	DIN 14462

Regulations from section: Media

Scope / Notice	Regulations applicable in Germany
Suitability for potable water	Trinkwasserverordnung (TrinkwV)
Suitability for potable water	DIN 1988-200
Suitability for potable water	EN 806-2
Suitability for heating water for pump hot water heating systems	VDI-Richtlinie 2035, Sheet 1 and Sheet 2

Regulations from section: Sealing elements

Scope / Notice	Regulations applicable in Germany
Area of use of the EPDM sealing element ■ Heating	DIN EN 12828

Regulations from section: Corrosion

Scope / Notice	Regulations applicable in Germany
Regulations for external corrosion protection	DIN EN 806-2
Regulations for external corrosion protection	DIN 1988-200
Construction of potable water installations	DIN 1988-200
Construction of potable water installations	EN 806-2
Regulations for material selection	DIN 50930-6
Regulations for material selection	DIN EN 12502-1

Regulations from section: Storage

Scope / Notice	Regulations applicable in Germany
Requirements for material storage	DIN EN 806-4, Chapter 4.2

Regulations from section: Leakage test

Scope / Notice	Regulations applicable in Germany
Test on a system that is finished but not yet covered	DIN EN 806-4
Leakage test for water installations	ZVSHK-Merkblatt: "Dichtheitsprüfungen von Trinkwasserinstallationen mit Druckluft, Inertgas oder Wasser"

Regulations from section: Maintenance

Scope / Notice	Regulations applicable in Germany
Operation and maintenance of potable water installations	DIN EN 806-5

2.2 Intended use



The press connector system is suitable for creating potable water installations in accordance with applicable directives, taking into consideration the material selection in accordance with applicable directives, see ↗ *'Regulations from section: Intended use' on page 5*. For use in other areas of application and in case of doubt over the correct material selection, contact Viega.

2.2.1 Areas of use

Use is possible in the following areas among others:

- Painting systems
- Potable water installations
- Industrial and heating systems
- Sprinkler systems (no certification for d 64)
 - Wet sprinkler systems
- Fire extinguishing systems, see ↗ *'Regulations from section: Fields of application' on page 5*
 - wet
 - wet / dry
 - dry
- Solar installations with flat collectors
- Compressed air systems
- Cooling water pipelines (closed circuit)

2.2.2 Media

The system is suitable for the following media, amongst others:

For the applicable directives, see ↗ *'Regulations from section: Media' on page 5.*

- Potable water:
 - Max. chloride concentration 250 mg/l
- Heating water for pump hot water heating systems
- Compressed air in compliance with the specification of the sealing elements used
 - EPDM at oil concentration < 25 mg/m³
- Anti-freeze, cooling brines up to a concentration of 50 %

2.3 Product description

2.3.1 Overview

The piping system consists of lube-free press connectors in connection with silicone-free stainless steel pipes and the corresponding press tools.

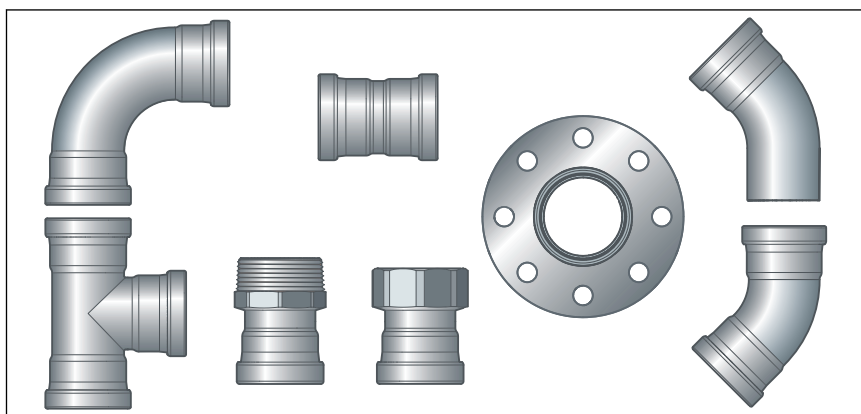


Fig. 1: Sanpress Inox XL LF

The system components are available in the following dimensions:
d 64.0 / 76.1 / 88.9 / 108.0.

2.3.2 Pipes

The following pipes are available from the system described:

Type of pipe	Stainless steel pipe 1.4401	Stainless steel pipe 1.4521
d	64.0 / 76.1 / 88.9 / 108.0	64.0 / 76.1 / 88.9 / 108.0
Material No.	1.4401 (X5CrNiMo 17-12-2), with 2.3 % molybdenum for increased durability	1.4521 (X2CrMoTi 18-2)
PRE value	24.1	24.1
Pipe marking	—	green line
Protective cap	yellow	Green

Pipe key data Sanpress XL pipe (1.4401 and 1.4521)

d x s [mm]	Volume per metre of pipe [l/m]	Pipe weight [kg/m]
64.0 x 2.0	2.83	3.04
76.1 x 2.0	4.08	3.70
88.9 x 2.0	5.66	4.34
108.0 x 2.0	8.49	5.30

Laying and fixing pipes

Only pipe clamps with chloride-free sound insulating inlays should be used to secure the pipes.

Observe the general rules of fixing technology:

- Do not use fixed pipelines as a support for other pipelines and components.
- Do not use pipe hooks.
- Observe distance to press connectors.
- Observe the expansion direction: Plan fixed and gliding points.

Make sure to affix the pipelines in such a way as to de-couple them from the installation body, so that they cannot transfer any structure-borne sound, resulting from thermal expansion or possible pressure surges, onto the installation body or other components.

Observe the following fixing intervals:

Interval between the pipe clamps

d [mm]	Fixing interval between the pipe clamps [m]
64.0	4.00
76.1	4.25
88.9	4.75
108.0	5.00

Length expansion

Pipelines expand with heat. Heat expansion is dependent on the material. Changes in length lead to tension within the installation. These tensions must be equalised with suitable measures.

The following are effective:

- Fixed and gliding points
- Expansion equalisation joints (expansion bends)
- Compensators

Heat expansion co-efficients of various pipe materials

Material	Heat expansion co-efficient α [mm/mK]	Example: Length expansion with pipe lengths L = 20 m and $\Delta T = 50$ K [mm]
Stainless steel 1.4401	0.0165	16.5

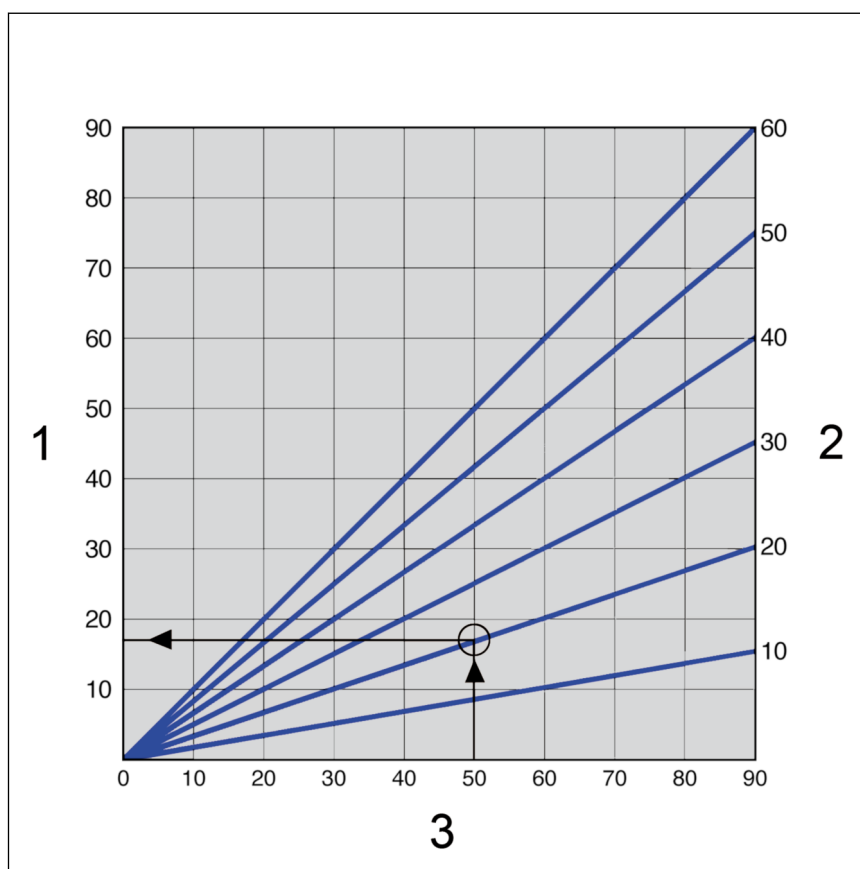


Fig. 2: Length expansion of Sanpress pipes

1 - Length expansion Δl [mm]

2 - Pipe length l_0 [m]

3 - Temperature difference $\Delta\theta$ [K]

The length expansion Δl can be taken from the diagram or can be calculated using the following formula:

$$\Delta l = \alpha \text{ [mm/mK]} \times L \text{ [m]} \times \Delta\theta \text{ [K]}$$

2.3.3 Press connectors

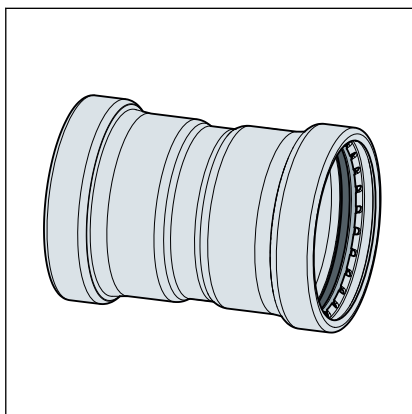


Fig. 3: Press connectors

On Sanpress Inox XL LF press connectors, there is a cutting ring, a separator ring and a sealing element in the bead of the press connector. The cutting ring cuts into the pipe during pressing and ensures a force-fit connection.

During installation, and later during the pressing, the separator ring protects the sealing element from damage from the cutting ring.

SC-Contur

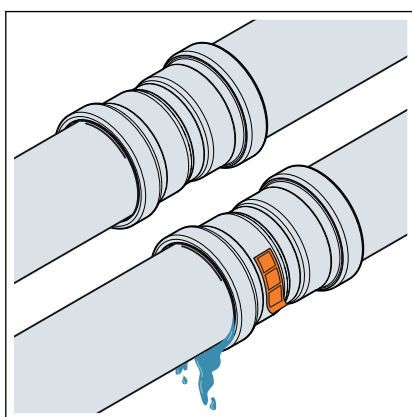


Fig. 4: SC-Contur

Viega press connectors are equipped with the SC-Contur. The SC-Contur is a safety technology that is certified by the DVGW and ensures that the press connector is guaranteed to be leaky in an unpressed state. In this way, inadvertently unpressed connections are noticed during a leakage test.

Viega guarantees that accidentally unpressed connections become visible during a leakage test:

- with the wet leakage test in the pressure range from 0.1–0.65 MPa (1.0–6.5 bar)
- with dry leakage test in the pressure range from 22 hPa–0.3 MPa (22 mbar–3.0 bar)

2.3.4 Sealing elements

The press connectors are factory-fitted with lab-free EPDM sealing elements.

Area of use of the EPDM sealing element

Area of use	Potable water	Heating	Solar installations	Compressed air	Technical gases
Area of use	all pipeline sections	Pump hot water heating system	Solar circuit	all pipeline sections	all pipeline sections
Operating temperature [T_{\max}]	110 °C	110 °C	¹⁾	60 °C	—
Operating pressure [P_{\max}]	1.6 MPa (16 bar)	1.6 MPa (16 bar)	0.6 MPa (6 bar)	1.6 MPa (16 bar)	—
Comments	—	T_{\max} 105 °C ¹⁾ 95 °C with radiator connection	for flat collectors	dry, oil content < 25 mg / m ³	²⁾

¹⁾ see ↗ 'Regulations from section: Sealing elements' on page 6

²⁾ Consultation with Viega required.

2.3.5 Markings on components

Pipe marking

The pipe markings contain important information regarding the material configuration and manufacture of the pipes. Their meaning is as follows:

- manufacturer
- system name
- pipe material
- certification
- Dimension
- supplier's mark
- date of manufacture
- batch number
- CE mark
- DOP and DOP number
- manufacturing standard

2.3.6 Mixed installations

In potable water installations, piping components from different metals can have a detrimental effect on each other and cause corrosion, for example. Adapters made of stainless steel, for instance, must not be connected directly to pipes or threaded connectors made of galvanised steel.



Components made of stainless steel and galvanised steel may not be directly connected, thread/adaptor press connectors made of gunmetal/silicon bronze are recommended here.

Permitted mixed installations

Generally, labs-free components of other Viega systems can be used in the Sanpress Inox XL LF system.

Please contact Viega for questions on this subject.

2.4 Information for use

2.4.1 Corrosion

Protect the press connector system against excessively high concentrations of chloride generated by both the medium and by external factors.

An excessive chloride concentration can lead to corrosion in stainless steel systems.

Avoid external contact with materials containing chloride

- Insulating materials must not have a water-soluble chloride ion content that exceeds 0.05 %.
- Sound insulating inlays on the pipe clamps must not contain leachable chloride.
- Stainless steel pipes must not come into contact with building materials or mortar containing chloride.

If external corrosion protection is required, observe the pertinent guidelines, see ↗ *'Regulations from section: Corrosion' on page 6*.



The press connector system is suitable for creating potable water installations in accordance with applicable directives, taking into consideration the material selection in accordance with applicable directives, see ↗ *'Regulations from section: Corrosion' on page 6*. For use in other areas of application and in case of doubt over the correct material selection, contact the Viega Service Center.

The chloride concentration in the medium must not exceed a maximum value of 250 mg/l.

This chloride is not a disinfectant, but in fact pertains to the content in sea and table salt (sodium chloride).

3 Handling

3.1 Transport



Sanpress pipes are free from silicon when delivered to the wholesaler.

Store and transport the pipes properly until used.

Observe the following when transporting pipes:

- Do not pull the pipes over the sill. The surface could be damaged.
- Secure pipes during transportation. Pipes may become bent due to shifting.
- Do not damage the protective caps on the pipe ends and do not remove them until immediately before mounting. Damaged pipe ends must not be pressed.

3.2 Storage



Viega guarantees that the press connectors are sent in a labs-free delivery state.

Keep the connector packaging closed and remove the press connector from the packaging only immediately before use.

For storage, comply with the requirements specified in the applicable regulations, see [🔗 'Regulations from section: Storage' on page 6](#):

- Store components in a clean and dry place.
- Do not store the components directly on the floor.
- Provide at least three points of support for the storage of pipes.
- Where possible, store different sizes separately.
Store small sizes on top of larger sizes if separate storage is not possible.
- Only use stainless steel cleaning agent to clean surfaces.
- Store pipes of different materials separately to prevent contact corrosion.

3.3 Assembly information

3.3.1 Mounting instructions

Checking system components

System components may, in some cases, become damaged through transportation and storage.

- Check all parts.
- Replace damaged components.
- Do not repair damaged components.
- Contaminated components may not be installed.

3.3.2 Potential equalisation



DANGER! Danger due to electrical current

An electric shock can lead to burns and serious injury and even death.

Because all metallic piping systems conduct electricity, unintentional contact with a live part can lead to the whole piping system and components connected to it (e. g. radiators) becoming energised.

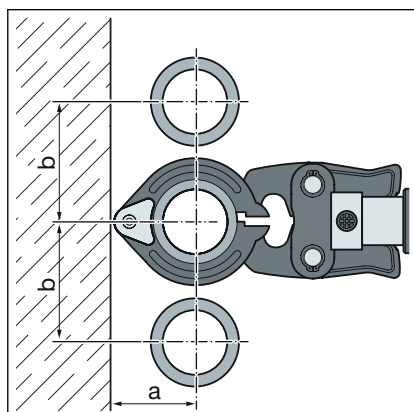
- Only allow electrical work to be carried out by qualified electricians.
- Always integrate the metal piping system into the potential equalisation.



It is the fitter of the electrical system who is responsible for ensuring that the potential equalisation is tested and secured.

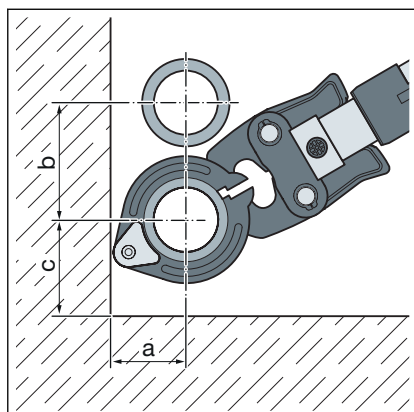
3.3.3 Space requirements and intervals

Pressing between pipelines



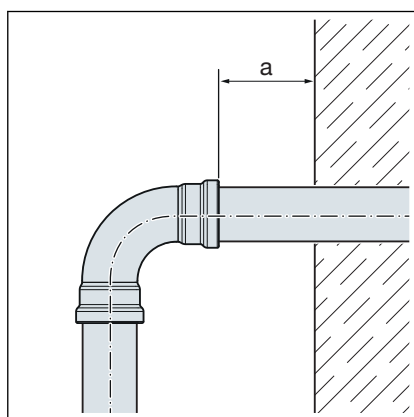
d	64.0	76.1	88.9	108.0
a [mm]	110	110	120	135
b [mm]	185	185	200	215

Pressing between pipe and wall



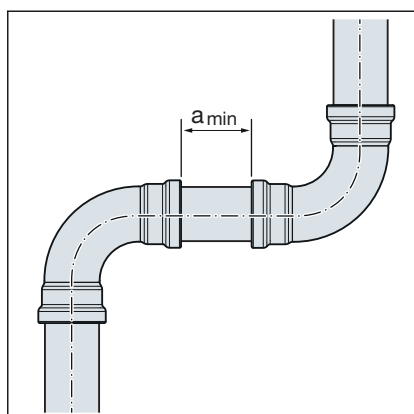
d	64.0	76.1	88.9	108.0
a [mm]	110	110	120	135
b [mm]	185	185	200	215
c [mm]	130	130	140	155

Wall distance



d	64.0–108.0
Minimum interval a_{\min} [mm]	25

Interval between the pressings



!

NOTICE!

Leaking press connections due to pipes being too short!

If two press connectors are to be mounted onto a pipe without an interval, the pipe must not be too short. If the pipe is not inserted up to the prescribed insertion depth in the press connector during pressing, the connection may become leaky.

d	64.0–108.0
Minimum distance a [mm]	15

Z dimensions

For the Z dimensions, refer to the respective product page in the online catalogue.

3.3.4 Required tools

The following tools are required for production of a press connection:

- pipe cutter or a fine-toothed hacksaw
- deburrer and coloured pen for marking
- press machine with constant pressing force of 32 kN
- Press ring with corresponding hinged adapter jaw, suitable for the pipe diameter and suitable profile

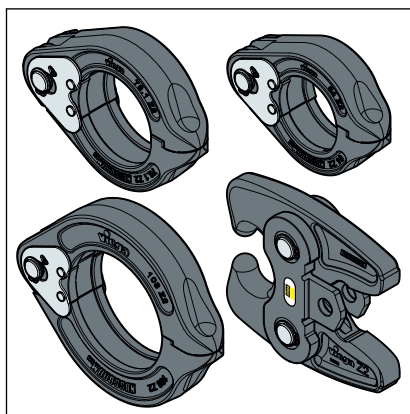


Fig. 5: Press rings and hinged adapter jaw



Viega recommends the use of Viega system tools when installing the press fittings.

The Viega system press tools have been developed and tailored specifically for the installation of Viega press connector systems.

3.4 Assembly

3.4.1 Shortening the pipes



NOTICE!

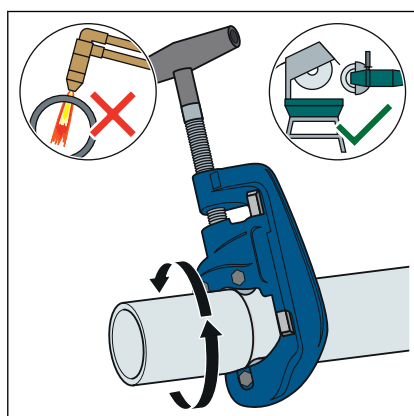
Leaking press connections due to damaged material!

Press connections can become leaky due to damaged pipes or sealing elements.

Observe the following instructions to avoid damage to pipes and sealing elements:

- Do not use cutting discs (angle grinders) or flame cutters when cutting to length.
- Do not use grease or oils (e. g. cutting oil).

For information about tools, also see [Chapter 3.3.4 'Required tools'](#) on page 18.



- Cut the pipe using a pipe cutter or fine-toothed hacksaw.
- Avoid grooves on the pipe surface.

3.4.2 Deburring the pipes

The pipe ends must be thoroughly deburred internally and externally after shortening.

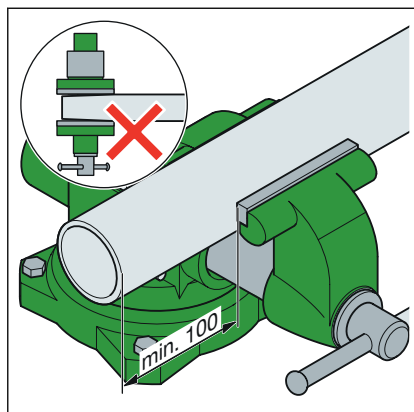
Deburring prevents the sealing element being damaged or the that the press connector cants when mounted. Viega recommends using a deburrer (model 2292.4XL).



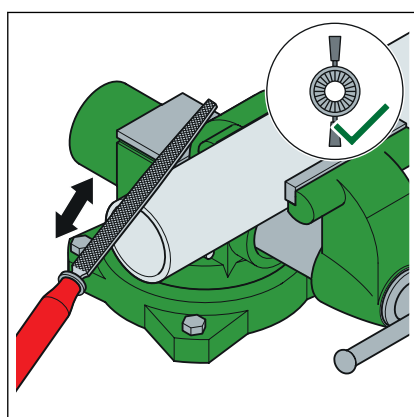
NOTICE!

Damage due to the wrong tool!

Do not use sanding disks or similar tools when deburring. The pipes could be damaged by these.

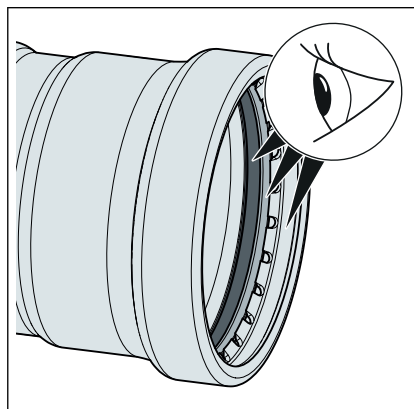


- Secure the pipe in the vice.
 - When clamping, leave an interval of at least 100 mm (a) to the pipe end.
- The pipe ends must not be bent or damaged.



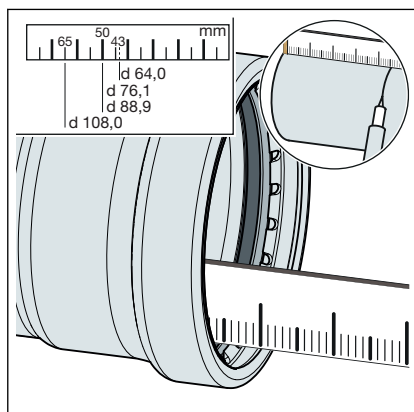
- Deburr the inside and outside of the pipe.

3.4.3 Pressing the connection



Requirements:

- The pipe end is not bent or damaged.
- The pipe is deburred.
- The correct sealing element is in the press connector.
EPDM = polished black

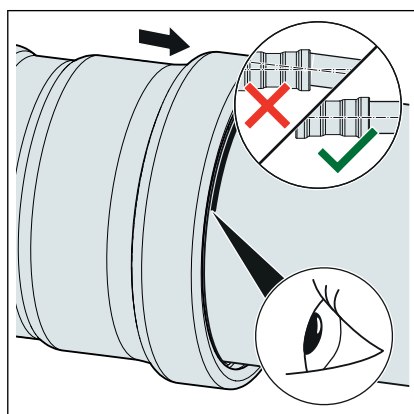


- Sealing element, separator ring and cutting ring are undamaged.
- The complete sealing element, separator ring and cutting ring are in the bead.

➤ Measure insertion depth in the connector.

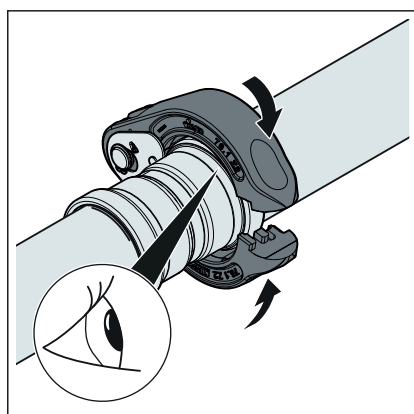
d [mm]	Insertion depth [mm]
64.0	43
76.1	50
88.9	50
108.0	65

➤ Mark the insertion depth on the pipe

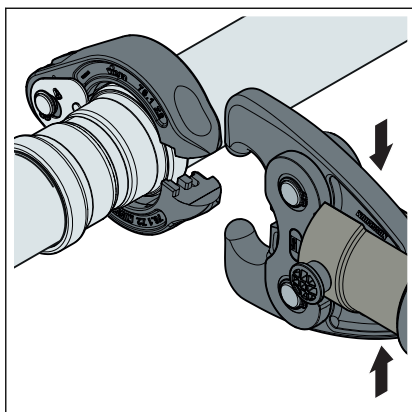


- Push the press connector up to the marked insertion depth on the pipe. Do not twist the press connector.
- Place the hinged adapter jaw onto the press machine and push the retaining bolt in until it clicks into place.

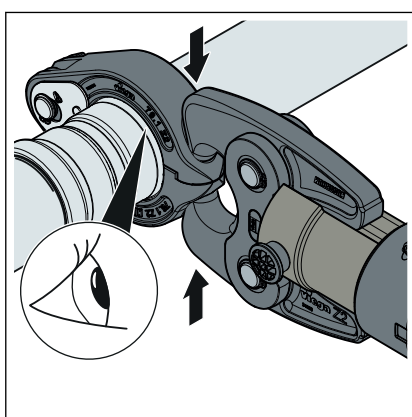
INFO! Observe the press tool instruction manual.



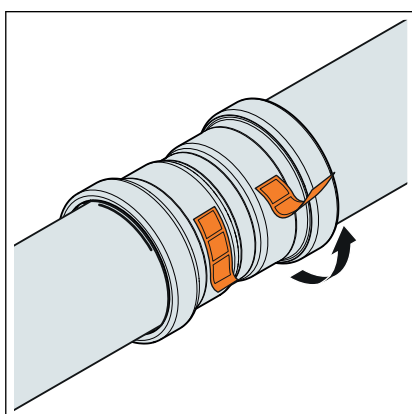
- Place the press ring onto the press connector. The press ring must completely cover the outside ring of the press connector.



- Open the hinged adapter jaw.



- Position the hinged adapter jaw into the seat of the press ring.
- Carry out the pressing process.
- Open the hinged adapter jaw and remove the press ring.



- Remove the checking strip.
- ◻ The connection is marked as having been pressed.

3.4.4 Leakage test

The installer must perform a leakage test before commissioning.

Carry out this test on a system that is finished but not covered yet.

Observe the applicable regulations, see [🔗 'Regulations from section: Leakage test' on page 6](#).

The leakage test pursuant to the applicable regulations must also be carried out for non-potable water installations, see [🔗 'Regulations from section: Leakage test' on page 6](#).

Document the result.

3.5 Maintenance

Observe the applicable regulations for the operation and maintenance of potable water installations, see ↗ *'Regulations from section: Maintenance' on page 7.*

3.6 Disposal

Separate the product and packaging materials (e. g. paper, metal, plastic or non-ferrous metals) and dispose of in accordance with valid national legal requirements.



Viega GmbH & Co. KG
service-technik@viega.de
viega.com

INT • 2021-03 • VPN200401

