

Multiplex Trio F inlet element

Instructions for Use



Model
6145.192

en_INT

Year built:
from 01/2011

viega

Table of contents

1	About these instructions for use	4
1.1	Target groups	4
1.2	Labelling of notes	4
1.3	About this translated version	5
2	Product information	6
2.1	Area of application	6
2.2	Product description	6
3	Handling	7
3.1	Assembly	7
3.1.1	Mounting inlet element	7
3.2	Disposal	9

1 About these instructions for use

1.1 Target groups

The information in this instruction manual is directed at the following groups of people:

- Heating and sanitary professionals and trained personnel

It is not permitted for individuals without the abovementioned training or qualification to mount, install and, if required, service this product. This restriction does not extend to possible operating instructions.

The installation of Viega products must take place in accordance with the general rules of engineering and the Viega instructions for use.

1.2 Labelling of notes

Warning and advisory texts are set aside from the remainder of the text and are labelled with the relevant pictographs.



DANGER!

This symbol warns against possible life-threatening injury.



WARNING!

This symbol warns against possible serious injury.



CAUTION!

This symbol warns against possible injury.



NOTICE!

This symbol warns against possible damage to property.



Notes give you additional helpful tips.

1.3 About this translated version

This instruction for use contains important information about the choice of product or system, assembly and commissioning as well as intended use and, if required, maintenance measures. The information about the products, their properties and application technology are based on the current standards in Europe (e. g. EN) and/or in Germany (e. g. DIN/DVGW).

Some passages in the text may refer to technical codes in Europe/Germany. These should serve as recommendations in the absence of corresponding national regulations. The pertinent national laws, standards, regulations and guidelines, as well as other technical guidelines, have priority over German/European guidelines in this manual: The information is not binding for other countries and territories and should, as mentioned, be considered as support.

2 Product information

2.1 Area of application

The inlet element is suitable as a spare part for one of the following drain/overflow models:

- Model 6145.4
- Model 6145.5
- Model 6145.6
- Model 6148.1

The inlet element in the drain unit of the drain/overflow can be replaced in the case of extreme contamination, limescale or damage.

2.2 Product description

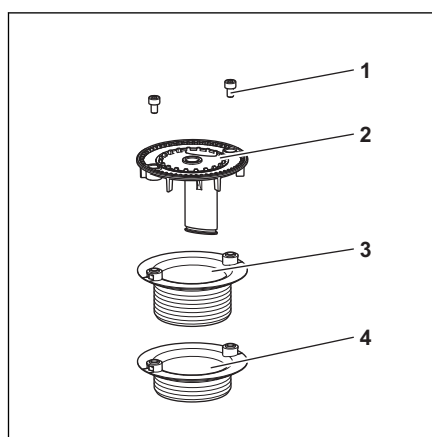


Fig. 1: Multiplex Trio F inlet element

- 1 - Allen screws
- 2 - Inlet element
- 3 - Valve top (height 30 mm)
- 4 - Valve top (height 22.5 mm)

The inlet element has a shaft on the underside through which the water from the inlet flows. The inlet shaft separates the incoming freshwater from the discharging dirty water and prevents the backflow of dirty water into the drinking water pipeline at normal water pressure.

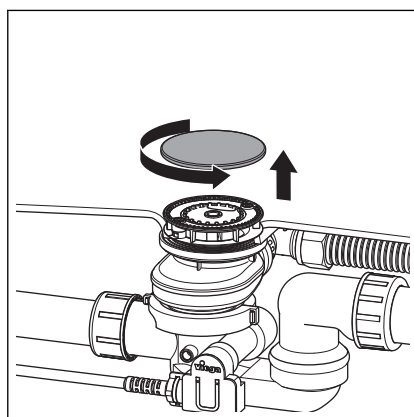
3 Handling

3.1 Assembly

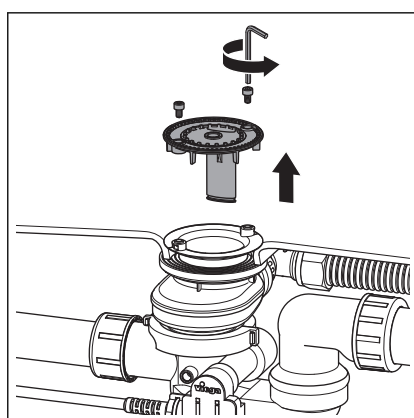
3.1.1 Mounting inlet element

If the inlet element is very dirty (e. g. due to limescale) or is damaged, it must be replaced.

Proceed as follows to replace the inlet element:

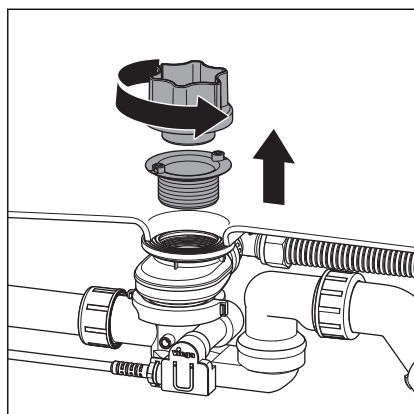


► Unscrew cover plate by hand.



► Loosen the Allen screws of the inlet element with the Allen key (size 3).

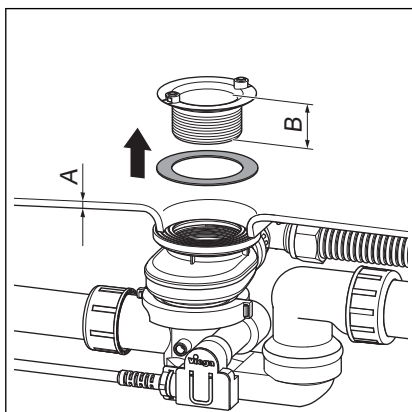
► Remove inlet element.



INFO! If the inlet has to be replaced, ignore this and the following three steps. Otherwise, secure the drain unit in such a way during the replacement of the valve top so that it cannot fall below the tub when you remove the valve top.

► Unscrew and remove valve top.

If the mounting aid (scope of delivery of the drain/overflow is still available, it can be used for this work step. Alternatively, work carefully with the pliers.

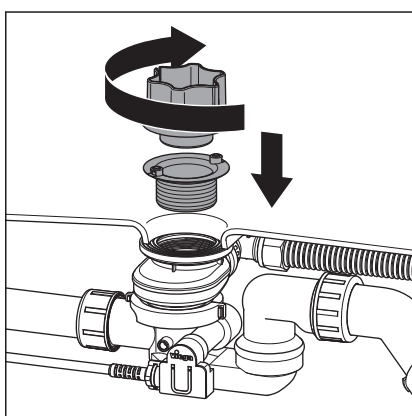


- Select suitable valve top:

Use the **B = 22.5 mm** high **flat** valve top for steel tubs with wall thickness **A = 2–11 mm**.

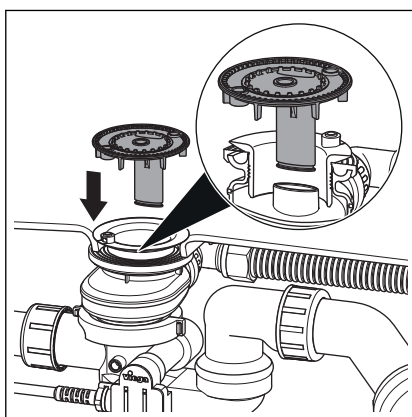
Use the **B = 30 mm** high valve top for plastic tubs with wall thickness **A = 11–16 mm**.

- Apply lubricant to the inside of the seal and place onto the underside of the valve top.



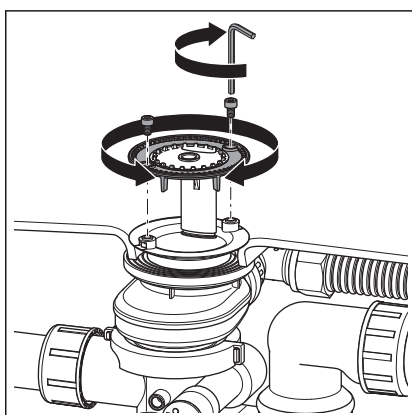
- Place the valve top in the drain unit and screw together.

If available, use the mounting aid.

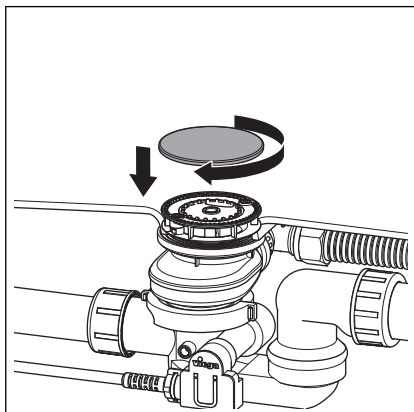


- Fit the inlet element into the drain unit.

The shaft on the side of the inlet element must be inserted into the recess in the drain unit.



- Turn the external ring of the inlet element in such a way that the screw heads of the screw-in valve is reachable.
- Fit Allen screws and tighten only gently by hand.



► Screw in cover plate.

3.2 Disposal

Separate the product and packaging materials (e. g. paper, metal, plastic or non-ferrous metals) and dispose of in accordance with valid national legal requirements.