

Duoplex drain
Functional unit

Instructions for Use



Model
6934.1

Year built:
from 01/1998

en_INT

viega

Table of contents

1	About these instructions for use	4
1.1	Target groups	4
1.2	Labelling of notes	4
1.3	About this translated version	5
2	Product information	6
2.1	Intended use	6
2.1.1	Areas of use	6
2.2	Product description	7
2.2.1	Overview	7
2.2.2	Technical data	7
2.3	Required accessories	8
3	Handling	9
3.1	Assembly information	9
3.1.1	Mounting conditions	9
3.1.2	Installation dimensions	9
3.2	Assembly	9
3.2.1	Mounting the drain	9
3.2.2	Connecting the wastewater system	11
3.2.3	Leakage test	12
3.3	Maintenance	12
3.4	Cleaning the drain	12
3.5	Disposal	14

1 About these instructions for use

Trade mark rights exist for this document, further information can be found at www.viega.com/legal-notice.

1.1 Target groups

The information in this instruction manual is directed at the following groups of people:

- Heating and sanitary professionals and trained personnel
- Operators
- Consumers

It is not permitted for individuals without the abovementioned training or qualification to mount, install and, if required, service this product. This restriction does not extend to possible operating instructions.

The installation of Viega products must take place in accordance with the general rules of engineering and the Viega instructions for use.

1.2 Labelling of notes

Warning and advisory texts are set aside from the remainder of the text and are labelled with the relevant pictographs.



DANGER!

This symbol warns against possible life-threatening injury.



WARNING!

This symbol warns against possible serious injury.



CAUTION!

This symbol warns against possible injury.



NOTICE!

This symbol warns against possible damage to property.



Notes give you additional helpful tips.

1.3 About this translated version

This instruction for use contains important information about the choice of product or system, assembly and commissioning as well as intended use and, if required, maintenance measures. The information about the products, their properties and application technology are based on the current standards in Europe (e. g. EN) and/or in Germany (e. g. DIN/DVGW).

Some passages in the text may refer to technical codes in Europe/Germany. These should serve as recommendations in the absence of corresponding national regulations. The pertinent national laws, standards, regulations and guidelines, as well as other technical guidelines, have priority over German/European guidelines in this manual: The information is not binding for other countries and territories and should, as mentioned, be considered as support.

2 Product information

2.1 Intended use

2.1.1 Areas of use



NOTICE!

Risk of damage due to unsuitable liquids.

To avoid damaging the drain, only introduce the following liquids:

- Liquids with a pH-value higher than 4
- typical household water with a maximum temperature of 95 °C

The Duoplex shower drain is a drain with odour trap for shower trays with 52 mm drain holes.



The cover plate must be purchased separately.

Detailed information regarding all shower tray models and the corresponding Viega drains can be found in the catalogue or on the Internet.

2.2 Product description

2.2.1 Overview

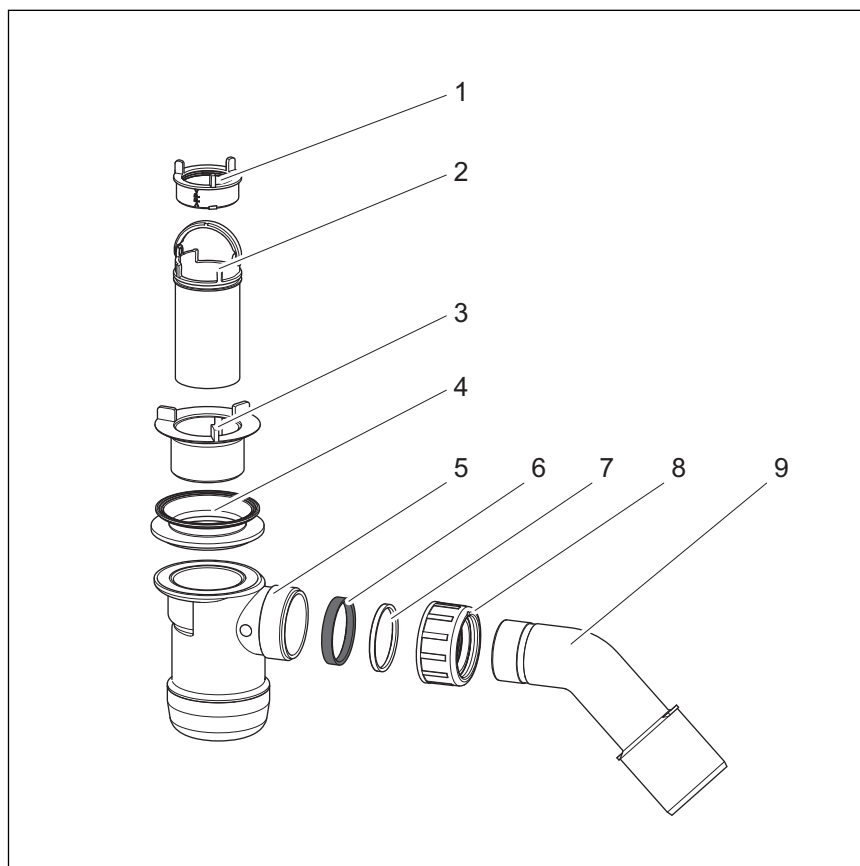


Fig. 1: Components

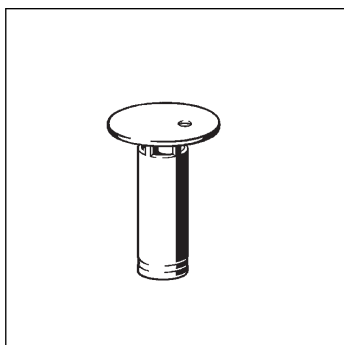
- 1 - valve ring
- 2 - immersion pipe
- 3 - valve top
- 4 - seal
- 5 - odour trap
- 6 - sealing ring
- 7 - sliding ring
- 8 - union nut
- 9 - drain elbow

2.2.2 Technical data

Drainage capacity at an accumulation height of 120 mm	0.65 l/s
Diameter drain hole	52 mm
DN (nominal diameter) drain support	40 / 50 mm
Height	80 mm
Dimensions and installation depth	↪ Chapter 3.1.2 „Installation dimensions“ on page 9
Water head seal	50 mm

2.3 Required accessories

Cover plate



A cover plate standing pipe must be purchased separately to complete the mounting of the drain (model 6934.0).

3 Handling

3.1 Assembly information

3.1.1 Mounting conditions

The following requirements exist for the mounting of the drain:

- The shower tray is installed.
- The drainage line is installed all the way to the shower tray.
- The underside of the shower tray is accessible.
- The drainage capacity is sufficient at an accumulation height of 120 mm.

3.1.2 Installation dimensions

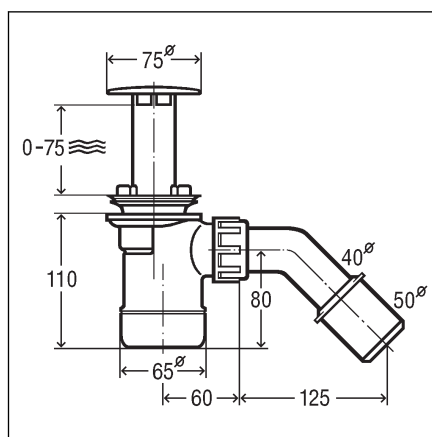


Fig. 2: Dimensional drawing

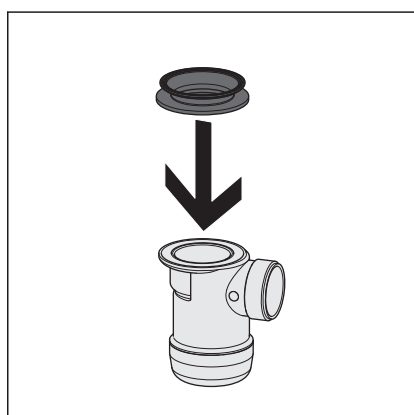
3.2 Assembly

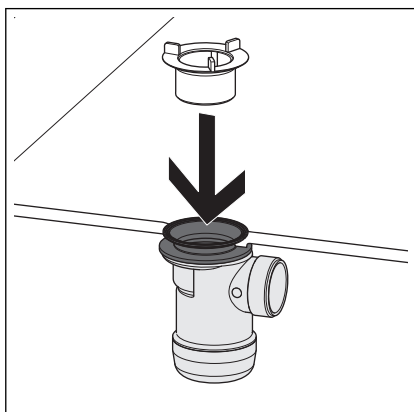
3.2.1 Mounting the drain

Insert seal and valve top

Proceed as follows to mount the drain:

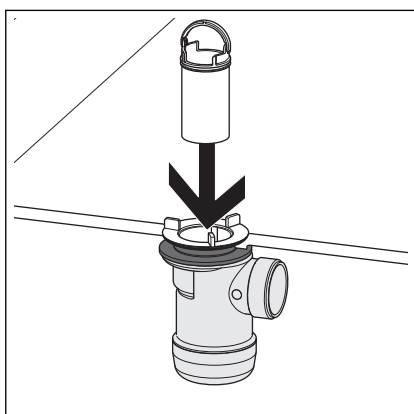
- Place the seal on the sealing surface of the drain and push into the holding groove.



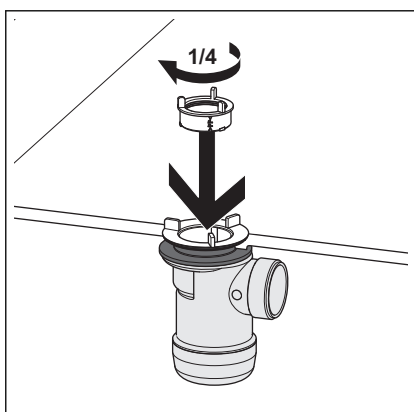


- Bring the drain unit with seal into the connecting position under the shower tray.
- Screw the valve top into the drain unit from above.

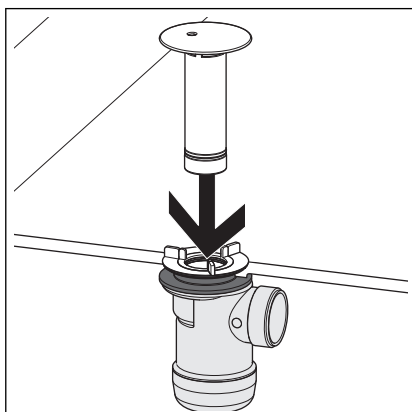
Secure drain



- Insert immersion pipe.



- Insert valve ring and lock into place with a quarter turn to the right.



INFO! The stand pipe is not included in the scope of delivery and must be purchased separately (model 6934.0).

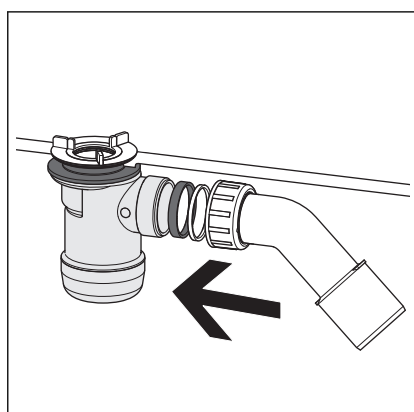
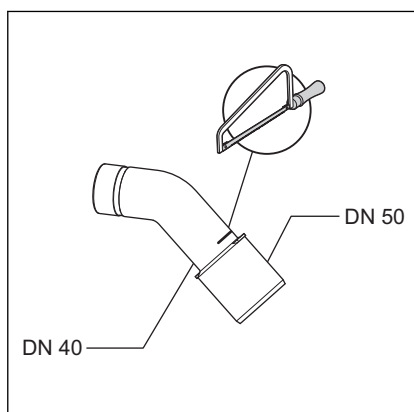
► Install standpipe.

3.2.2 Connecting the wastewater system

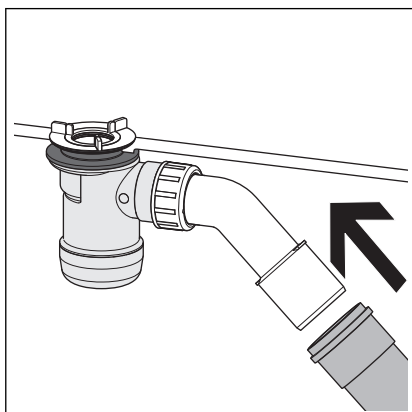
Proceed as follows to connect the drain to the wastewater system:

Requirement:

- The drain unit is installed onto the shower tray.
- If the wastewater pipe only has a diameter of 40 mm, cut off drain elbow.



- Push union nut, sliding ring and seal onto the drain elbow.
- Screw the union nut on the drain unit.



- Align the odour trap in such a way that the drain elbow can be connected to the wastewater pipe.
- Push wastewater pipe onto the drain elbow.

3.2.3 Leakage test

The leakage test is only carried out as a visual inspection.

- Check drain fitting for visible leaks.

3.3 Maintenance



NOTICE!

Risk of damage due to unsuitable cleaning agent.

The following cleaning agents can damage chrome-plated surfaces and therefore may not be used:

- scouring agent
- abrasive sponges
- lime, plaster or cement dissolver
- solvents or other acidic cleaning agents

Normal soap or a mild cleaning agent can be used for regular care and prevention of lime scale on the rotatable rosette and valve cone. Under no circumstances should scouring agent or scratching objects be used.

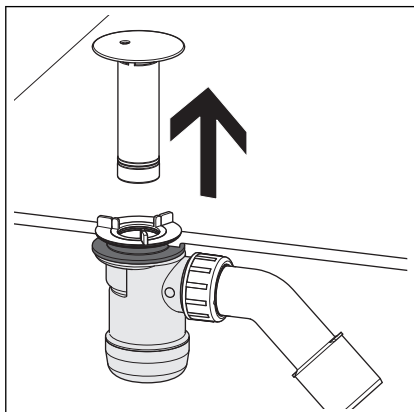
Strong stains, even around the drain unit and the siphon, can be removed using typical household cleaner. It should be noted that the cleaning agent should be rinsed off after the prescribed soaking time. There should be no residue on the components.

3.4 Cleaning the drain

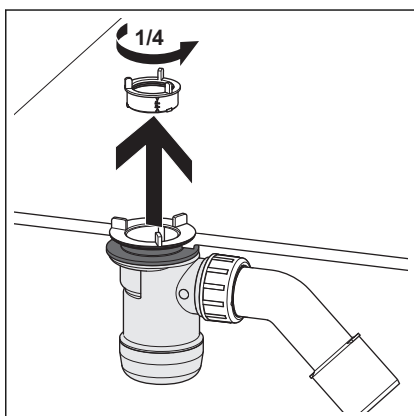


NOTICE!

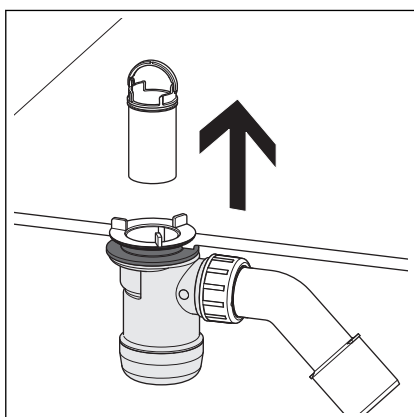
Be careful not to damage the odour trap when cleaning the drain system.



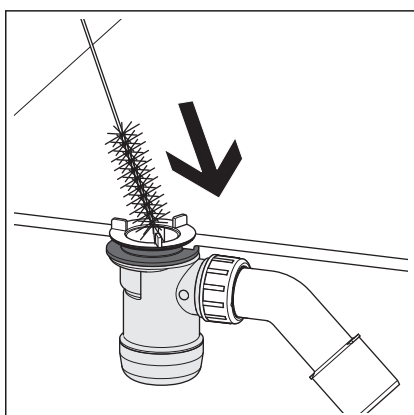
► Remove standpipe.



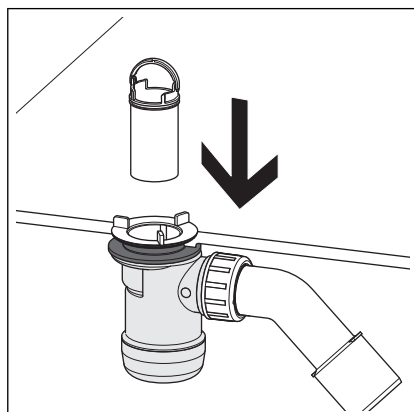
► Unscrew and remove valve ring with a quarter turn to the left.



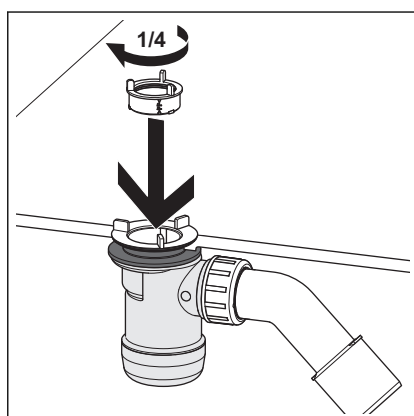
► Remove the immersion pipe upwards.



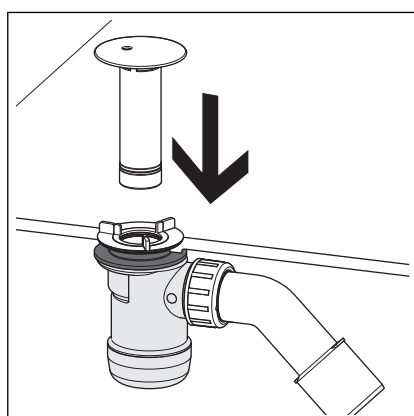
► Clean the drain carefully to avoid damaging the fitting.



► Replace immersion pipe.



► Re-insert valve ring and let it lock into place with a quarter turn to the right.



► Re-insert standpipe.

3.5 Disposal

Separate the product and packaging materials (e. g. paper, metal, plastic or non-ferrous metals) and dispose of in accordance with valid national legal requirements.