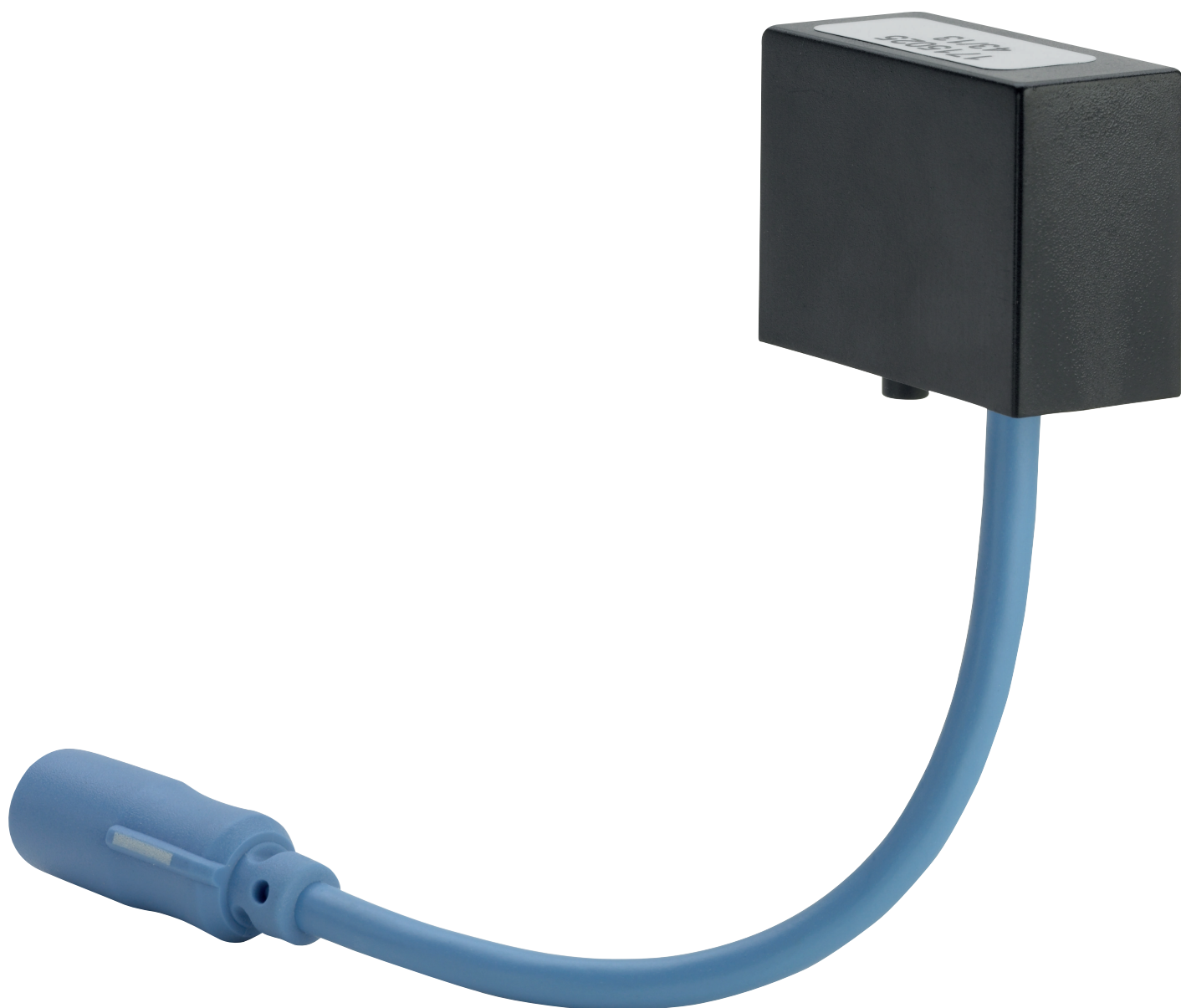


Radio receiver

Instructions for Use



for the reception of a flush actuation via radio signal

Model
8350.35

Year built:
from 06/2012

en_INT

viega

Table of contents

1	About these instructions for use	4
1.1	Target groups	4
1.2	Labelling of notes	4
1.3	About this translated version	5
2	Product information	6
2.1	Intended use	6
2.1.1	Areas of use	6
2.2	Product description	6
2.2.1	Overview	6
2.2.2	Operating mode	6
2.2.3	Extensions	7
3	Handling	8
3.1	Assembly	8
3.2	Commissioning	9
3.3	Disposal	10

1 About these instructions for use

Trade mark rights exist for this document, further information can be found at www.viega.com/legal-notice.

1.1 Target groups

The information in this instruction manual is directed at the following groups of people:

- Heating and sanitary professionals and trained personnel

It is not permitted for individuals without the abovementioned training or qualification to mount, install and, if required, service this product. This restriction does not extend to possible operating instructions.

The installation of Viega products must take place in accordance with the general rules of engineering and the Viega instructions for use.

1.2 Labelling of notes

Warning and advisory texts are set aside from the remainder of the text and are labelled with the relevant pictographs.



DANGER!

This symbol warns against possible life-threatening injury.



WARNING!

This symbol warns against possible serious injury.



CAUTION!

This symbol warns against possible injury.



NOTICE!

This symbol warns against possible damage to property.



Notes give you additional helpful tips.

1.3 About this translated version

This instruction for use contains important information about the choice of product or system, assembly and commissioning as well as intended use and, if required, maintenance measures. The information about the products, their properties and application technology are based on the current standards in Europe (e. g. EN) and/or in Germany (e. g. DIN/DVGW).

Some passages in the text may refer to technical codes in Europe/Germany. These should serve as recommendations in the absence of corresponding national regulations. The pertinent national laws, standards, regulations and guidelines, as well as other technical guidelines, have priority over German/European guidelines in this manual: The information is not binding for other countries and territories and should, as mentioned, be considered as support.

2 Product information

2.1 Intended use

2.1.1 Areas of use

The radio receiver may only be used with the following Viega products:

Compatible WC flush plates:

- Visign for Public 5, model 8326.16
- Visign for Public 6, model 8326.15
- Visign for Care sensitive, model 8352.21
- Visign for More 100 sensitive, model 8352.11
- Visign for More 100 sensitive, model 8352.12
- Visign for More 103 sensitive, model 8355.11
- Visign for More 103 sensitive, model 8355.12

Compatible WC flush actuation:

- Model 8350.31
- Model 8350.32
- Model 8350.33
- Model 8350.34

2.2 Product description

2.2.1 Overview

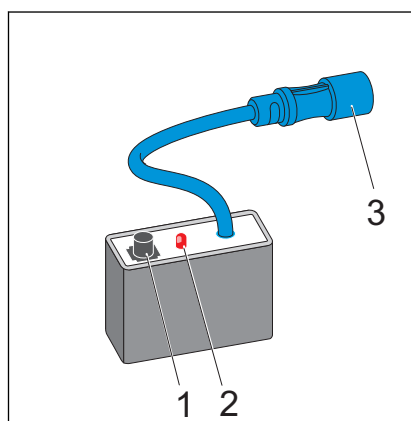


Fig. 1: Radio receiver 8350.35

- 1 - programming button
- 2 - LED
- 3 - connection adapter

2.2.2 Operating mode

Signals to actuate the flush (e. g. on support hinged handles) sent by HEWI radio transmitters can be received by the radio receiver.

Up to 32 receivers can be connected to a radio receiver.

2.2.3 Extensions

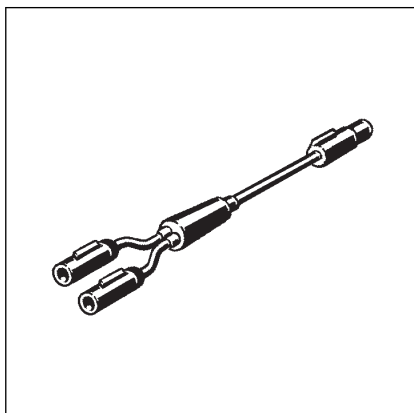


Fig. 2: Extension cable adapter model 8350.36

Multiple sensors can be connected to a control at the same time using the extension cable adapter model 8350.36. This is how e. g. a button can be combined with the radio receiver.

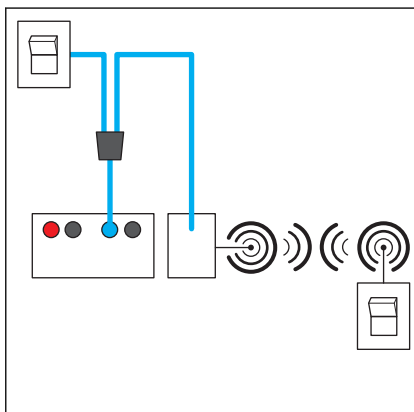
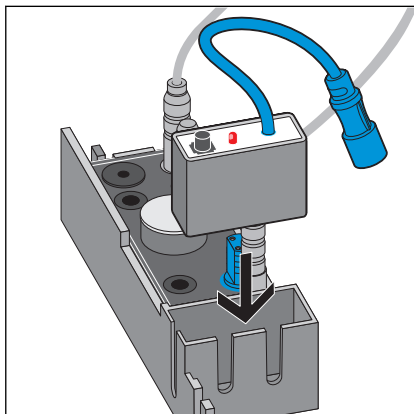


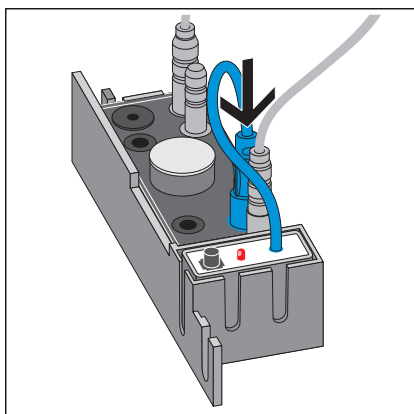
Fig. 3: Connection diagram for radio and cable sensors

3 Handling

3.1 Assembly



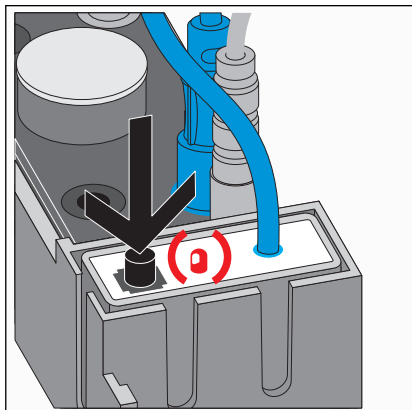
► Insert radio receiver into the bracket of the control.



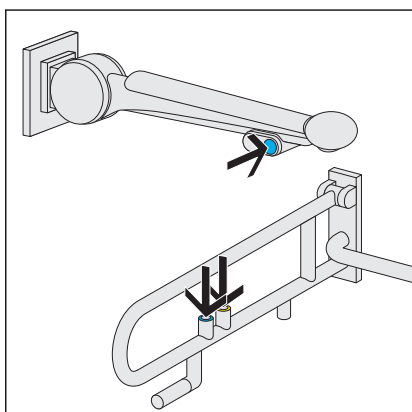
► Create plug connection from radio receiver to control.

3.2 Commissioning

Programming



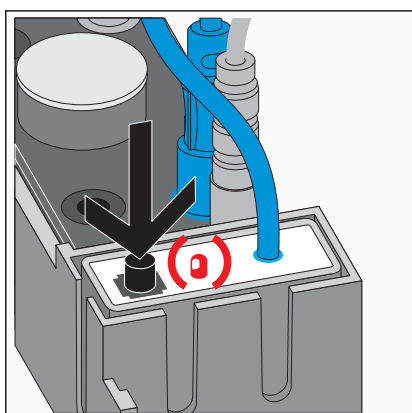
- Press programming button briefly.
- ⇒ The LED blinks once.



- Press the flush button of the radio transmitter to be programmed within 30 seconds.
- In the case of dual volume radio transmitters, push one of the two flush buttons.
- ⇒ The LED blinks three times.

- Repeat the process to program additional transmitters (maximum 32 per receiver).

Deleting memory



- Keep programming button pressed for approx. 8 seconds.
- ⇒ The LED blinks twice.

- Release programming button.
- ⇒ The radio receiver's memory has been deleted.

3.3 Disposal

Separate the product and packaging materials (e. g. paper, metal, plastic or non-ferrous metals) and dispose of in accordance with valid national legal requirements.