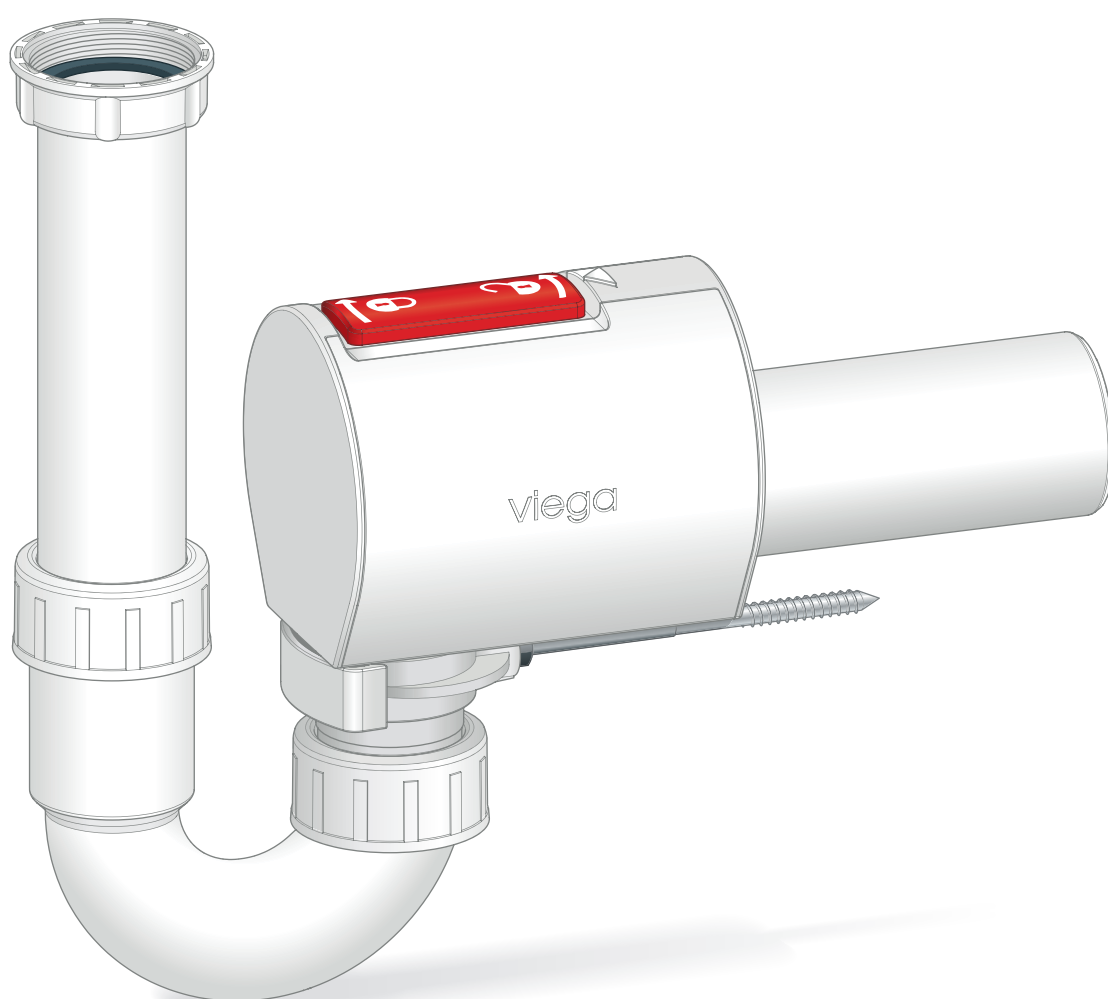


Instructions for Use

Sperrfix backflow trap type 5



for inlet below

Model
4995.1

viega

Table of contents

1	About these instructions for use	3
1.1	Target groups	3
1.2	Labelling of notes	3
1.3	About this translated version	4
2	Product information	5
2.1	Standards and regulations	5
2.2	Intended use	5
2.2.1	Areas of application	5
2.2.2	Place of installation and installation conditions	6
2.3	Product description	7
2.3.1	Overview	7
2.3.2	Operating mode	8
3	Handling	9
3.1	Assembly information	9
3.1.1	Installation dimensions	9
3.2	Mounting base unit	9
3.3	Maintenance	13
3.4	Disposal	17

1 About these instructions for use

Trade mark rights exist for this document; for further information, go to viega.com/legal.

1.1 Target groups

The information in this instruction manual is directed at the following groups of people:

- Heating and plumbing experts and trained personnel

Individuals without the abovementioned training or qualification are not permitted to mount, install and, if required, maintain this product. This restriction does not extend to possible operating instructions.

The installation of Viega products must take place in accordance with the general rules of engineering and the Viega instructions for use.

1.2 Labelling of notes

Warning and advisory texts are set aside from the remainder of the text and are labelled with the relevant pictographs.



DANGER!

This symbol warns of possible life-threatening injury.



WARNING!

This symbol warns of possible serious injury.



CAUTION!

This symbol warns of possible injury.



NOTICE!

This symbol warns of possible damage to property.



This symbol gives additional information and hints.

1.3 About this translated version

This instruction for use contains important information about the choice of product or system, assembly and commissioning as well as intended use and, if required, maintenance measures. The information about the products, their properties and application technology are based on the current standards in Europe (e.g. EN) and/or in Germany (e.g. DIN/DVGW).

Some passages in the text may refer to technical codes in Europe/Germany. These should serve as recommendations in the absence of corresponding national regulations. The relevant national laws, standards, regulations, directives and other technical provisions take priority over the German/European directives specified in this manual: The information herein is not binding for other countries and regions; as said above, they should be understood as a recommendation.

2 Product information

2.1 Standards and regulations

The following standards and regulations apply to Germany / Europe and are provided as a support feature.

Regulations from section: Application areas

Scope / Notice	Regulations applicable in Germany
Grundfix Plus Control meets the requirements as type 3 backflow trap with double backflow protection	EN 13564

Regulations from section: Place of installation and installation conditions

Scope / Notice	Regulations applicable in Germany
Correct place of installation of the backflow trap	EN 12056
Securing of drainage points beneath the backflow level	DIN EN 12056-4
Securing of drainage points beneath the backflow level	DIN 1986-100
Requirements in backflow traps type 3	EN 13564

2.2 Intended use

2.2.1 Areas of application

The Sperrfix backflow valve is a backflow-proof siphon with two closing flaps for drainage objects such as sinks or washing machines. The backwater valve corresponds to type 5 and complies with the applicable regulations, see [🔗 'Regulations from section: Application areas' on page 5](#).

The backwater valve is suitable for the following operating conditions:

- for drainage pipes DN 40 or 50
 - Drainage capacity Ø50 1.0 l/s
 - Drainage capacity Ø40 0.8 l/s
- for household waste water up to a temperature of 95 °C with pH values ≥ 4 or ≤ 10

Use in industrial areas or in pipelines, which transport aggressive liquids is not permitted. This includes cleaning agents, which can damage sanitary equipment, drainage equipment and pipe materials.

Viega recommends closing the emergency trap if operation, where no wastewater is produced, is interrupted for a number of days.

2.2.2 Place of installation and installation conditions

According to applicable regulations, drainage points beneath the back-flow level should be secured against backflow from the sewer, see *☞ 'Regulations from section: Place of installation and installation conditions' on page 5.*

A backflow trap can be used if

- there is a downward slope to the sewer;
- the rooms are of lower-ranking significance, i.e., neither the inhabitants' health nor major assets would be damaged if the rooms were flooded.

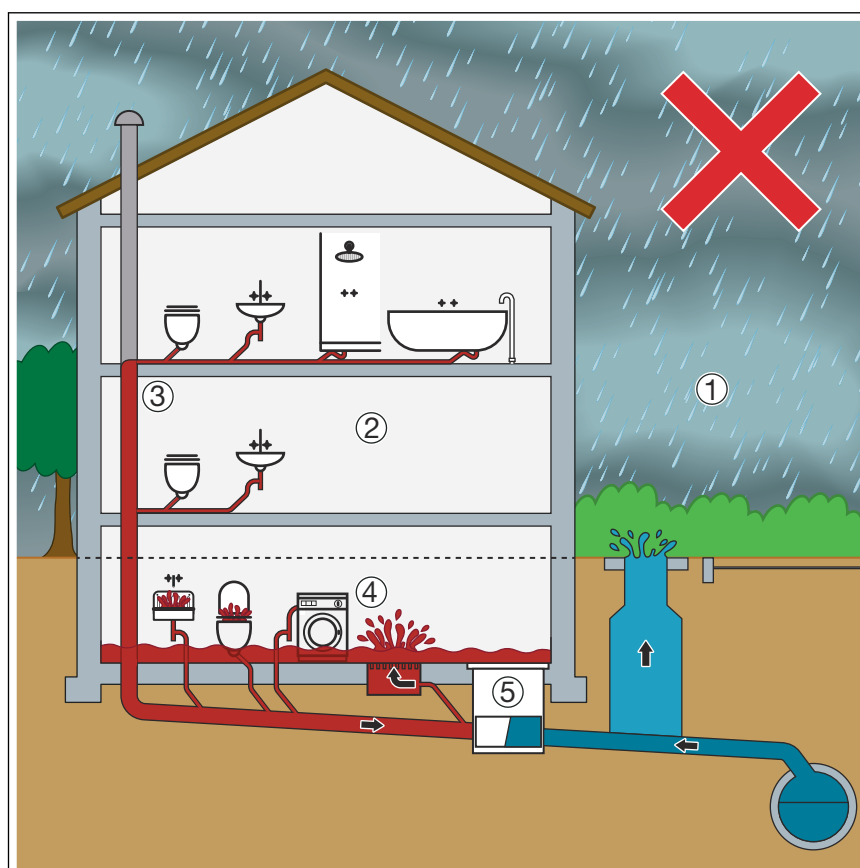



Fig. 1: Wrong place of installation of the backflow trap

The connection of the upper floor (3) onto the underground pipe must be made between the backflow trap and sewer within the building (5) – only then is it possible to ensure that the wastewater system can function faultlessly. To ensure that drainage is permanently guaranteed, backflow traps may not be employed as the central safeguard for a building with drainage equipment installed above the backflow level (1) – in the event of backflow, it would lead to flooding in the building due to wastewater being unable to drain away (4).

See  'Regulations from section: Place of installation and installation conditions' on page 5

2.3 Product description

2.3.1 Overview

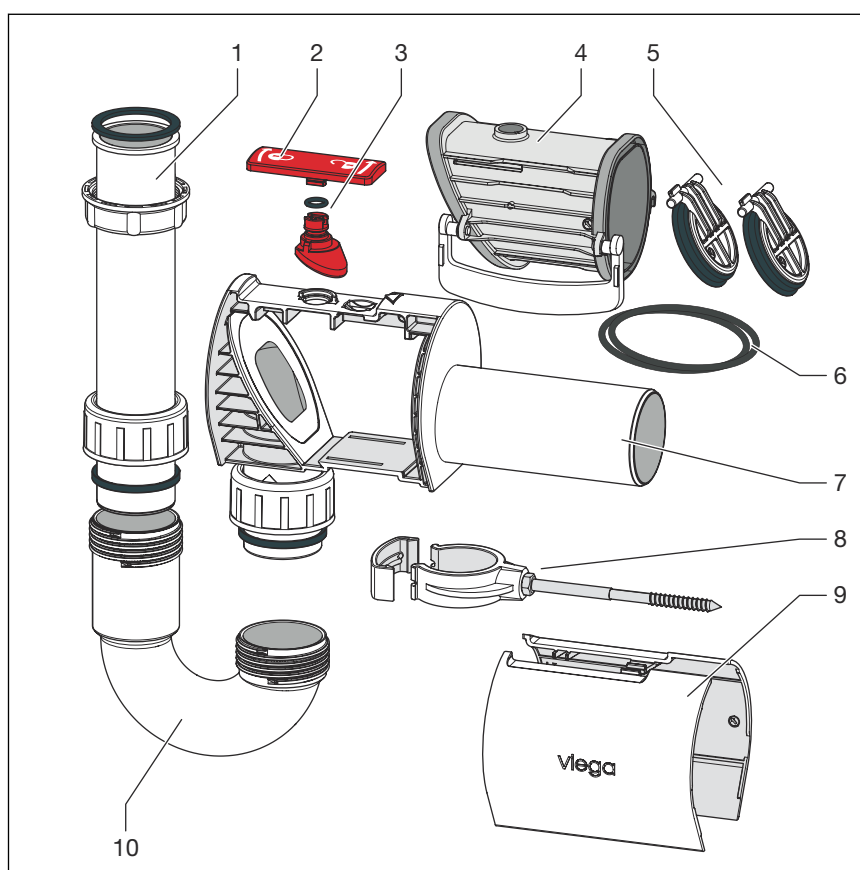


Fig. 2: Scope of delivery

- 1 Adjusting pipe with seal
- 2 Manual actuator
- 3 Manual-actuator insert
- 4 Backflow unit
- 5 Flaps
- 6 Backflow unit sealing elements
- 7 Backflow trap base unit
- 8 Fixing
- 9 Sealing cap
- 10 Odour trap

2.3.2 Operating mode

The shutter valves of the backflow trap are closed; they open automatically when the water drains off.

In addition, the backflow trap can be closed manually using a manual actuator.

3 Handling

3.1 Assembly information

3.1.1 Installation dimensions

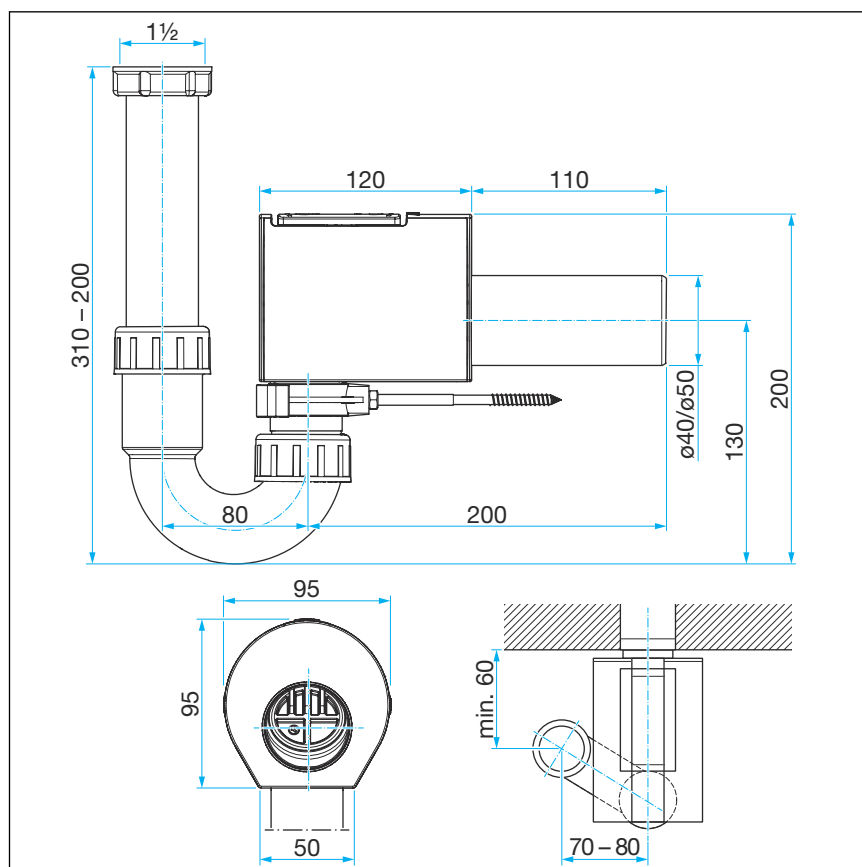
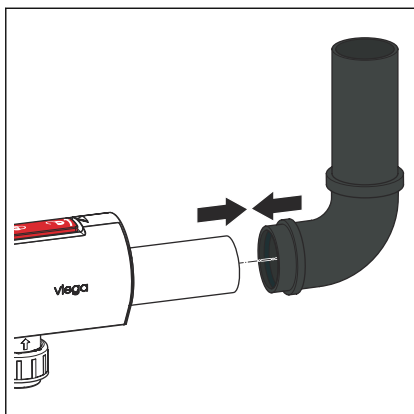


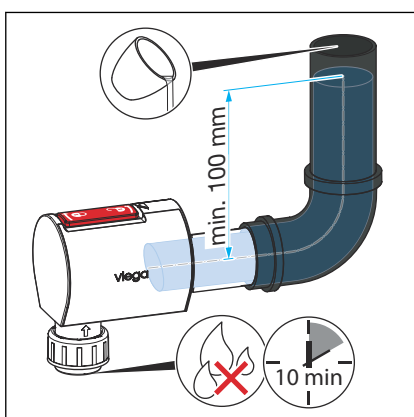
Fig. 3: Installation dimensions

3.2 Mounting base unit

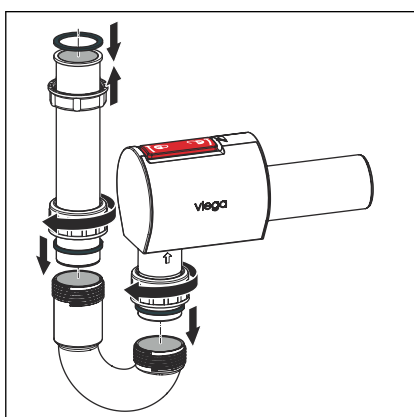
The installation in the drainage pipeline may only be carried out by construction or specialised sanitary companies observing the building regulations and following this instruction for use.



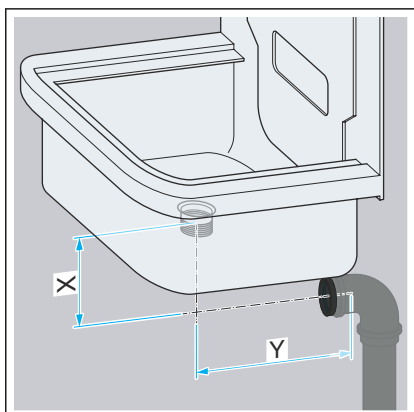
► Attach the test equipment.



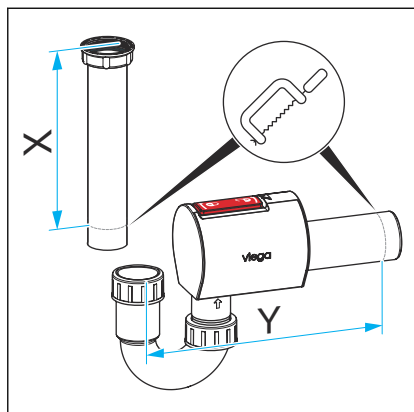
► Test the backflow trap.



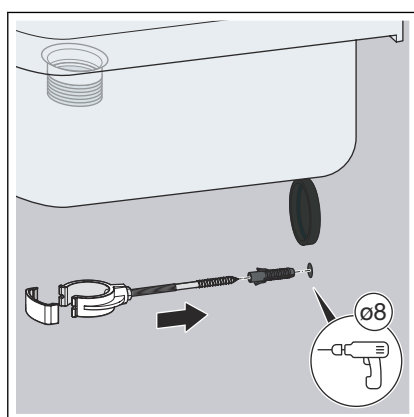
► Assemble the pipe odour trap.



► Determine odour trap height X and length Y. Determine length Y including sleeve length.

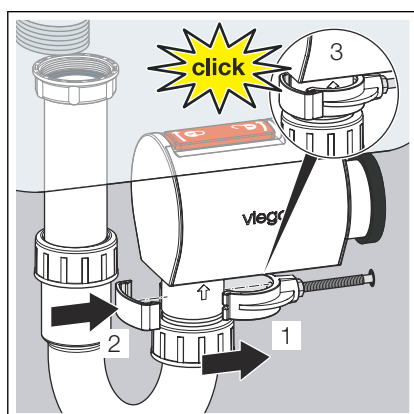


► Shorten the adjusting pipe and the drain socket.

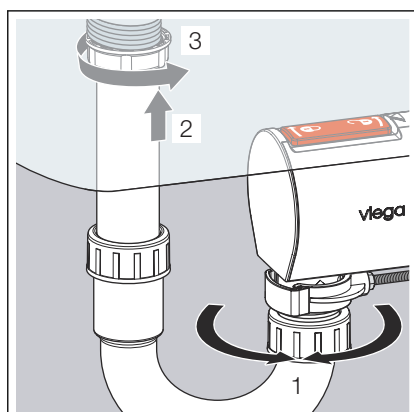


► Install the fixing.

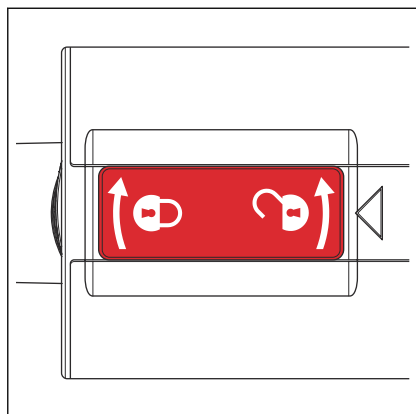
NOTICE! Do not damage the drain pipeline.



► Mount the odour trap.

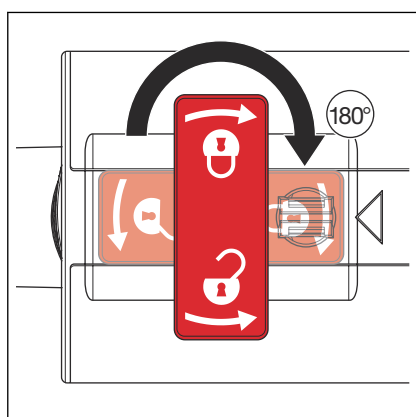


► If the odour trap is to be installed on a sink basin, install the odour trap with an offset.

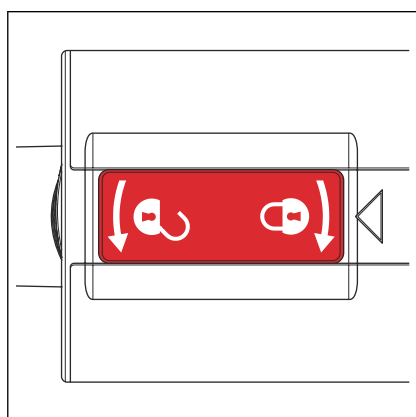


► Manual actuator open

Die shutter valves open and close by themselves.



► To close the backflow trap, turn the manual actuator 180° clockwise.



► Manual actuator closed

3.3 Maintenance

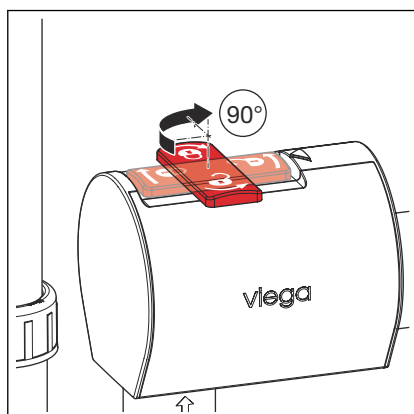


NOTICE!

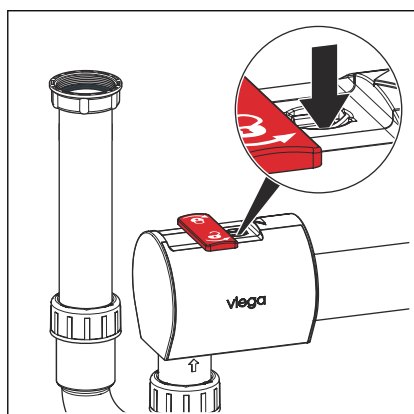
To ensure safe operation, carry out maintenance of the system twice a year.

Requirements:

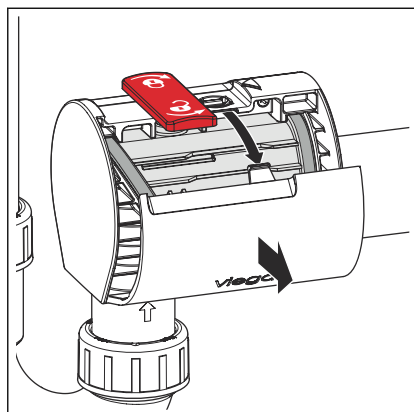
- Maintenance must be carried out by a professional.
- Only use original parts for repair, maintenance and extension.
- Replace defective components, do not repair.
- When using cameras and cleaning devices (cleaning spiral, high-pressure cleaner), protect the backflow trap against mechanical damage.
- Only begin maintenance after ensuring that there is no backflow and the drainage objects in front of the backflow trap are being not used.



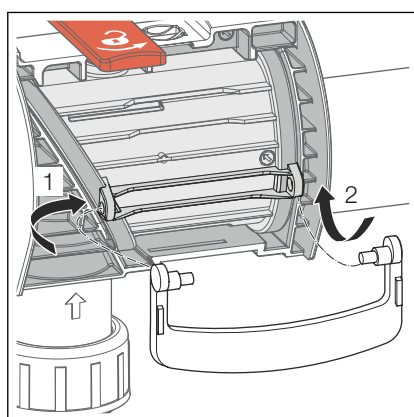
- To unlock the sealing cap, turn the manual actuator 90° clockwise to the centre position.



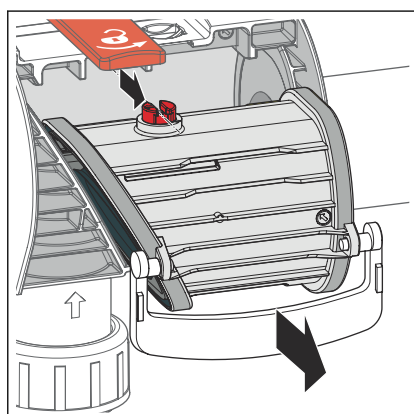
- Unlock the sealing cap at the top.



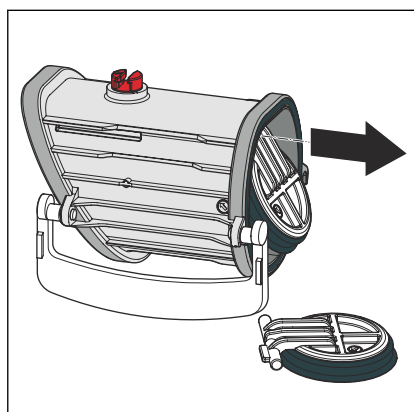
➤ Remove the sealing cap.



➤ Attach the handle.

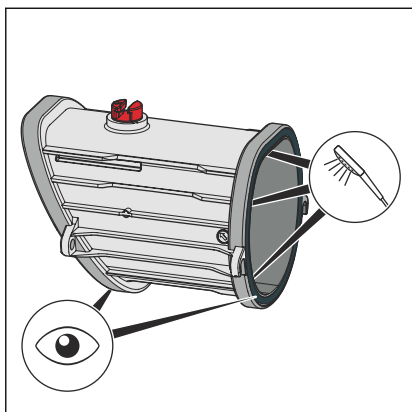


➤ Pull out the backflow unit.

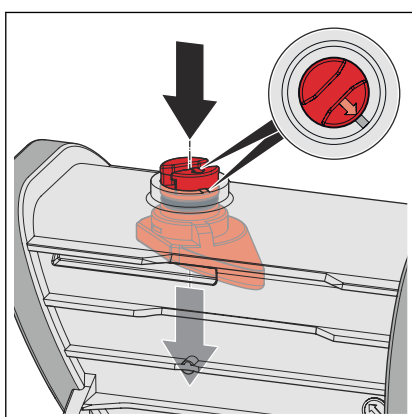


➤ Remove the shutter valves.

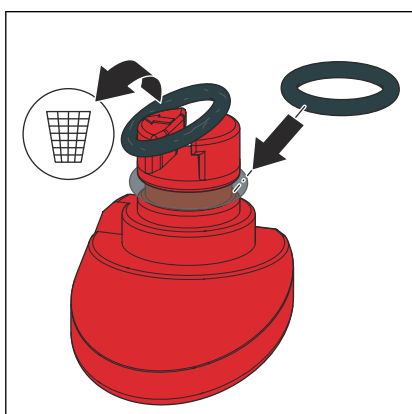
➤ Check and clean the seals. If the shutter valves or seals are defective, replace the components.



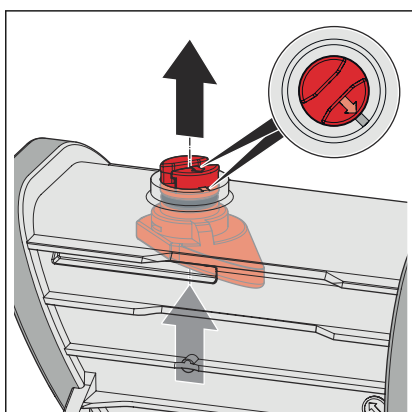
- Clean the backflow unit.
- Check the sealing elements for damage. If the sealing elements are damaged, replace them.



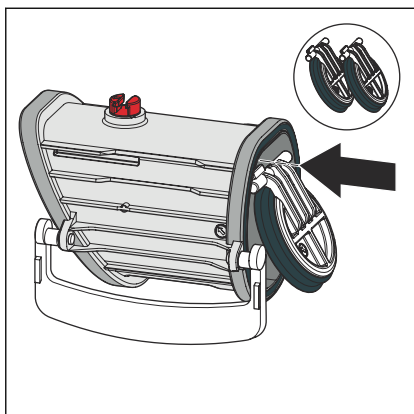
- To remove the manual actuator, turn the insert to the position shown.



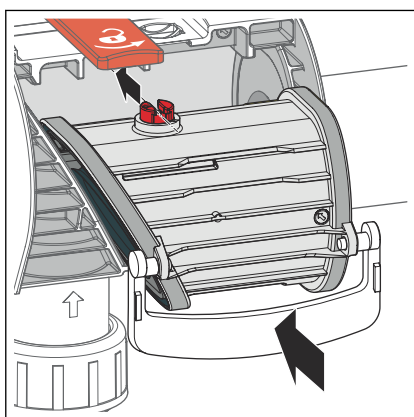
- Replace and grease the sealing element on the manual-actuator insert.



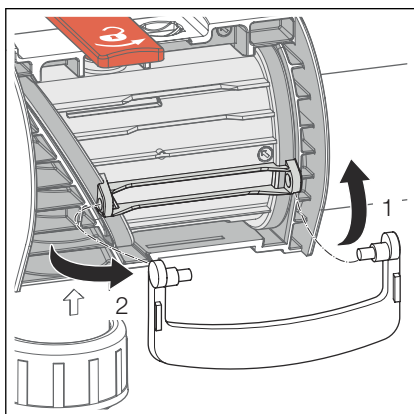
- Install the manual-actuator insert.



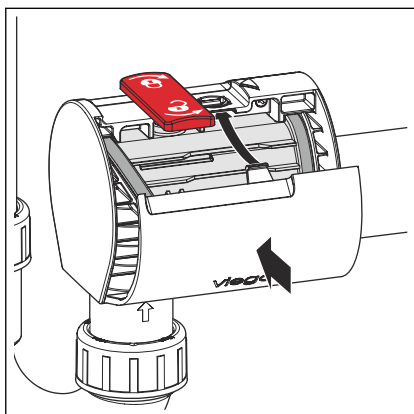
► Insert the shutter valves.



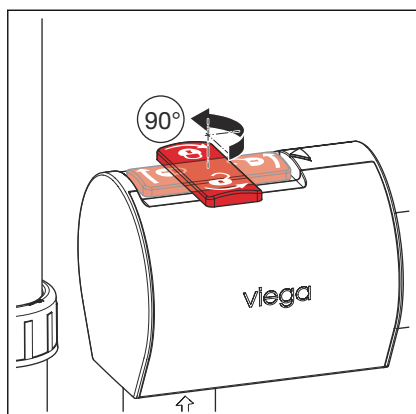
► Insert the backflow unit.



► Remove the handle.



► Put on the sealing cap.



► To lock the sealing cap, turn the manual actuator 90° anti-clockwise.

3.4 Disposal

Separate the product and packaging materials (e. g. paper, metal, plastic or non-ferrous metals) and dispose of in accordance with valid national legal requirements.



Viega GmbH & Co. KG
service-technik@viega.de
viega.com

INT • 2025-03 • VPN220476

