

Instructions for Use

Multiplex drain/overflow Visign M5



Model
6163

Year built (from)
06/2015

viega

Table of contents

1	About these instructions for use	3
1.1	Target groups	3
1.2	Labelling of notes	3
1.3	About this translated version	4
2	Product information	5
2.1	Intended use	5
2.1.1	Areas of application	5
2.2	Product description	6
2.2.1	Overview	6
2.2.2	Technical data	7
2.3	Accessories	7
3	Handling	9
3.1	Assembly information	9
3.1.1	Mounting conditions	9
3.1.2	Installation dimensions	9
3.1.3	Required tools and materials	10
3.2	Assembly	11
3.2.1	Mounting overflow	11
3.2.2	Mounting the drain	12
3.2.3	Connecting overflow and drain	14
3.2.4	Connecting the wastewater system	15
3.2.5	Mounting equipment set	15
3.2.6	Leakage test	16
3.3	Use	16
3.4	Care	17
3.5	Disposal	17

1 About these instructions for use

Trade mark rights exist for this document; for further information, go to viega.com/legal.

1.1 Target groups

The information in this instruction manual is directed at the following groups of people:

- Heating and plumbing experts and trained personnel
- Operators
- Consumers

Individuals without the abovementioned training or qualification are not permitted to mount, install and, if required, maintain this product. This restriction does not extend to possible operating instructions.

The installation of Viega products must take place in accordance with the general rules of engineering and the Viega instructions for use.

1.2 Labelling of notes

Warning and advisory texts are set aside from the remainder of the text and are labelled with the relevant pictographs.



DANGER!

This symbol warns of possible life-threatening injury.



WARNING!

This symbol warns of possible serious injury.



CAUTION!

This symbol warns of possible injury.



NOTICE!

This symbol warns of possible damage to property.



This symbol gives additional information and hints.

1.3 About this translated version

This instruction for use contains important information about the choice of product or system, assembly and commissioning as well as intended use and, if required, maintenance measures. The information about the products, their properties and application technology are based on the current standards in Europe (e.g. EN) and/or in Germany (e.g. DIN/DVGW).

Some passages in the text may refer to technical codes in Europe/Germany. These should serve as recommendations in the absence of corresponding national regulations. The relevant national laws, standards, regulations, directives and other technical provisions take priority over the German/European directives specified in this manual: The information herein is not binding for other countries and regions; as said above, they should be understood as a recommendation.

2 Product information

2.1 Intended use

2.1.1 Areas of application



NOTICE!

Risk of damage due to unsuitable liquids

To avoid damaging the drain, only introduce the following liquids:

- Typical household wastewater with temperatures up to 95 °C
- The pH value must be higher than 4 but lower than 10.

The Multiplex drain/overflow is a combined drain/overflow with optional 5 cm water level increase for bathtubs with a 52 mm drain hole.



Please note, this model has no odour trap. A separate odour trap must be installed to complete the mounting.

The drain/overflow is suitable for bathtubs with a central drain outlet.

Detailed information regarding all bathtub models and the corresponding Viega drains/overflows can be found in the catalogue or on the Internet.

2.2 Product description

2.2.1 Overview

The following components are included in the scope of delivery of the Multiplex drain / overflow:

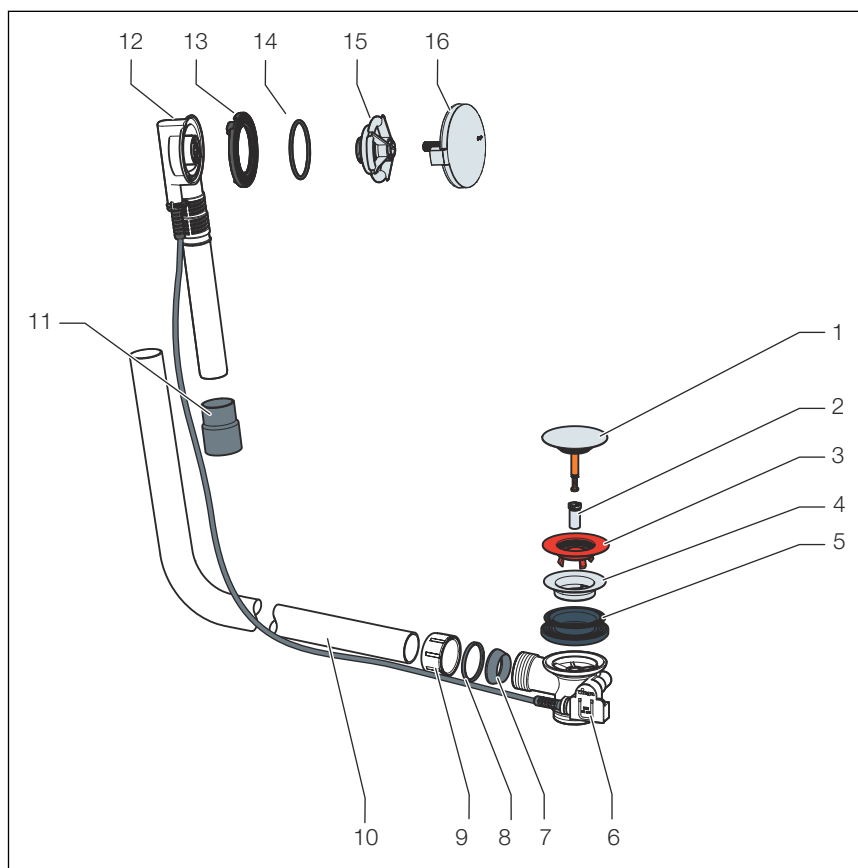


Fig. 1: Component overview

- 1 Drain plug
- 2 Fixing screw
- 3 Site protection
- 4 double seal
- 5 drain unit
- 6 Seal
- 7 Sliding ring
- 8 Union nut
- 9 Overflow pipe
- 10 Bowden cable
- 11 Coupling
- 12 Overflow unit
- 13 Profile seal
- 14 Sealing element
- 15 Fixing flange
- 16 Rotatable rosette

2.2.2 Technical data

Drainage capacity (at an accumulation height of 300 mm)	<i>The drainage capacity depends on the odour trap used.</i>
Overflow capacity (at an accumulation height of 60 mm)	<i>The overflow capacity depends on the odour trap used.</i>
Diameter of bathtub drain hole	52 mm
Threaded drain unit	1½ inch
Length of Bowden cable	725 mm
Length	130–370 mm
Height	180–430 mm
Dimensions and installation depth	☞ Chapter 3.1.2 'Installation dimensions' on page 9

2.3 Accessories



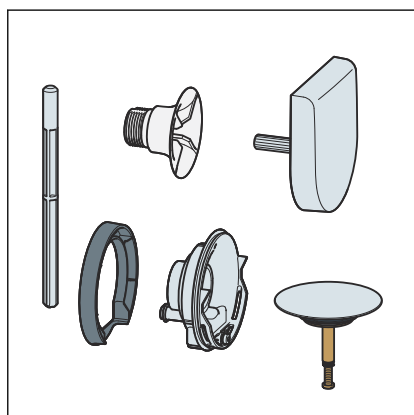
The accessories shown here are not included in the scope of delivery. If required, it must be purchased separately.

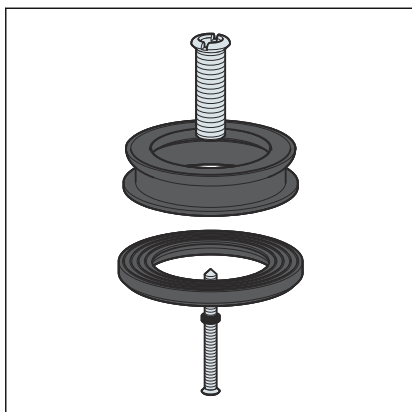
Optional accessories

Equipment set with water level increase

The water level of the overflow can be increased by 5 cm with the equipment set. The equipment set contains a rotatable rosette, a fixing flange, a drain plug, a fixing screw, a flange cover and a mounting aid for the drain of the functional unit.

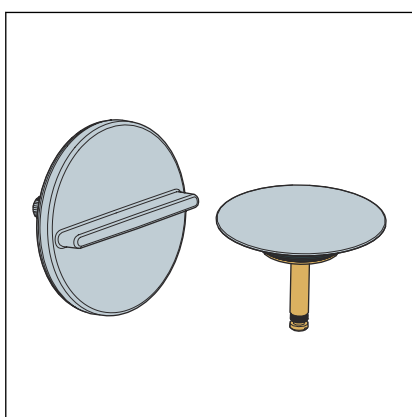
Equipment set Multiplex Visign M9: model 6171.0





Multiplex extension set

It is possible to extend the odour trap below the bathtub in the case of bathtubs with a very thick floor. The extension set, model 6161.7, is available for such cases.



Equipment sets

If another design of the rotatable rosette and of the drain plug is required, the equipment set supplied can be exchanged for a set that is available separately.

Equipment set Multiplex Visign M3: model 6154.0

3 Handling

3.1 Assembly information

3.1.1 Mounting conditions

The following requirements exist for the mounting of the drain / overflow:

- The bathtub is installed.
- The drain pipeline is installed all the way to the bathtub.
- The underside of the bathtub is accessible.

3.1.2 Installation dimensions

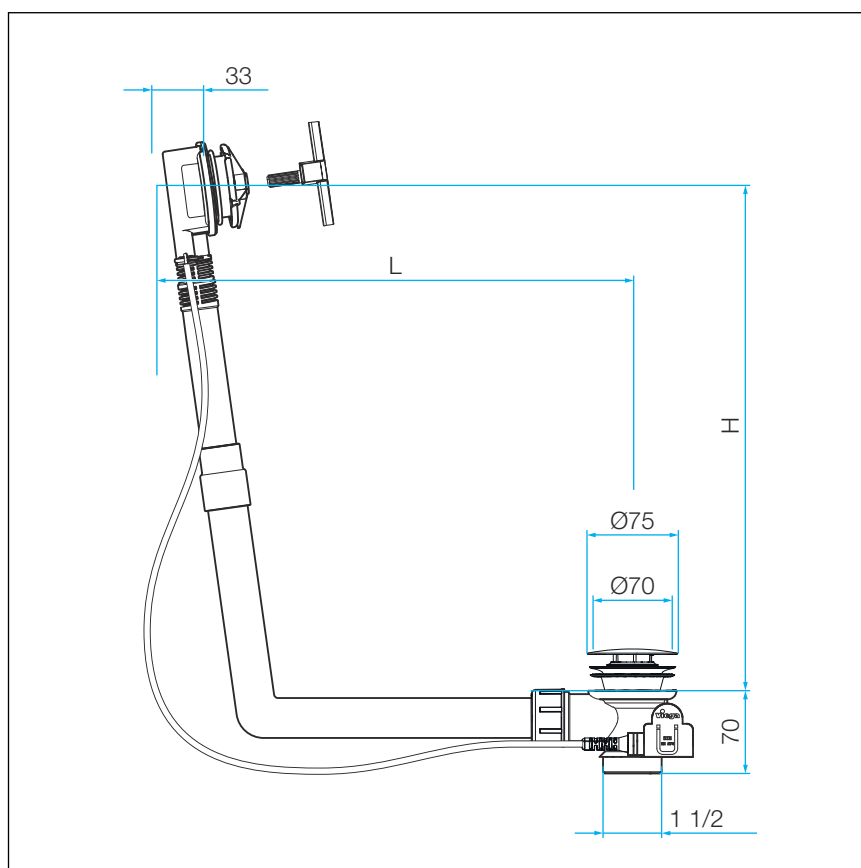


Fig. 2: Dimensional drawing

The following values are valid for L (length) and H (height):

L = 130–370

H = 180–430

3.1.3 Required tools and materials

Tool

- socket spanner (size 14)
- fine-toothed saw
- flat-blade screwdriver

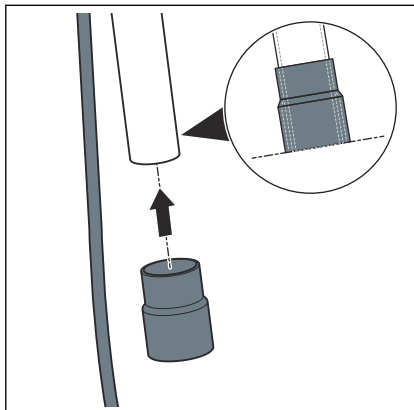
Material

The following material must be purchased separately and must be available during mounting:

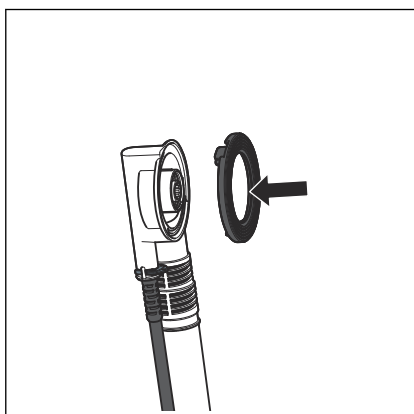
- Odour trap

3.2 Assembly

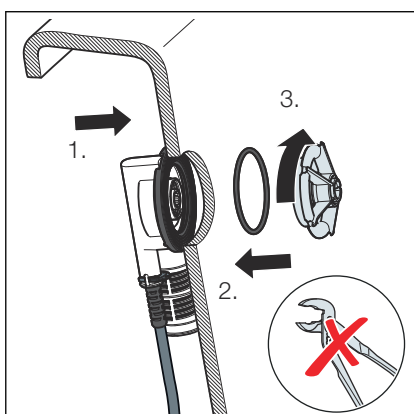
3.2.1 Mounting overflow



- Push the rubber sleeve onto the pipe of the overflow unit.
The bottom edge must be flush with the edge of the overflow pipe.



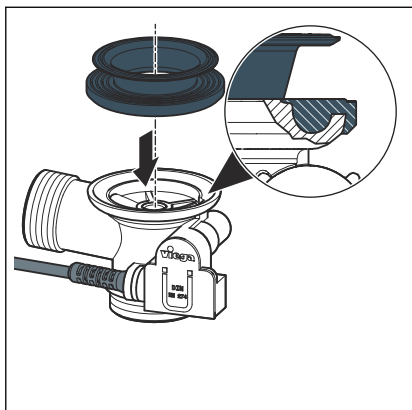
- Fit the profile seal in the overflow unit.



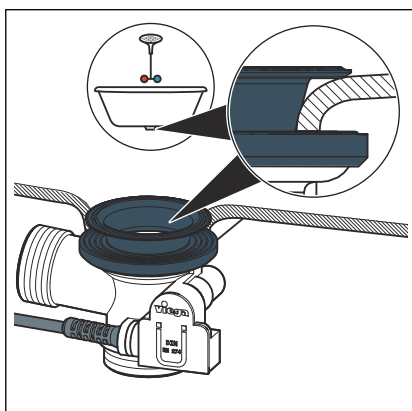
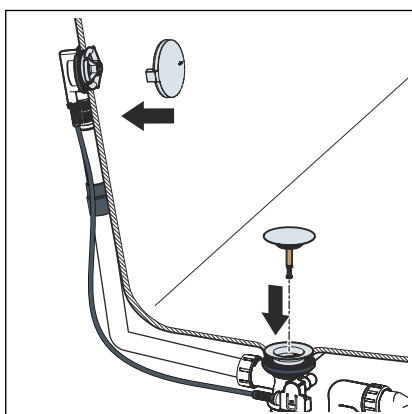
- Insert the sealing element into the circular slot of the fixing flange.
- Hold the overflow unit on the overflow opening of the bathtub from the outside.
- Screw the fixing flange into the overflow unit by hand.

NOTICE! Pliers or other tools may damage the fixing flange. Only turn the fixing flange by hand.

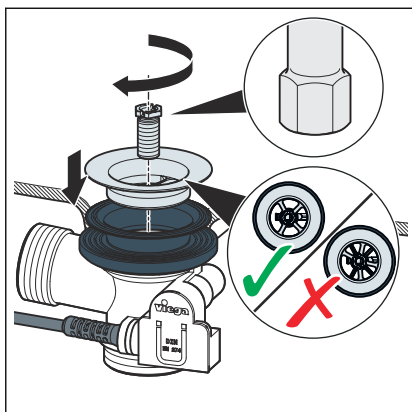
3.2.2 Mounting the drain



- Place the double seal onto the drain unit in such a way that the recess is positioned above the connecting pipe.
- Pull the edge of the double seal over the edge of the drain.



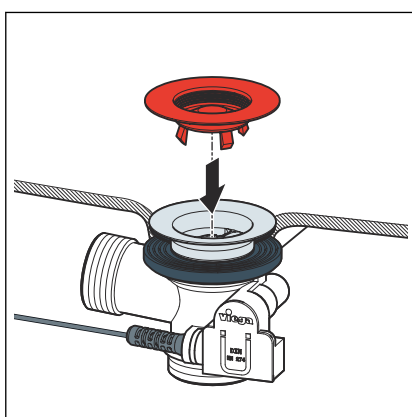
- Hold the drain with the double seal onto the drain hole of the bathtub from below.
- Pull the upper part of the double seal through the drain hole.



- Fit the valve top in the double seal.

INFO! The cross-shaped structures of the drain unit and the valve top must be positioned parallel on top of each other to ensure the full drainage capacity.

- Place the fixing screw in the drain unit and tighten using a socket spanner (size 14).



- Insert the site protection.

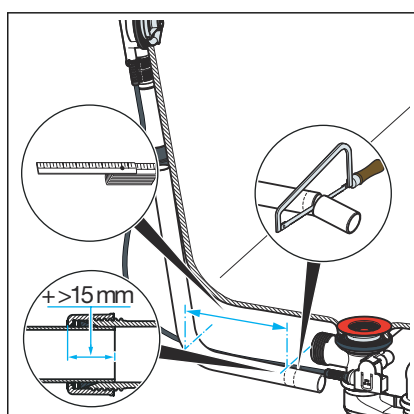
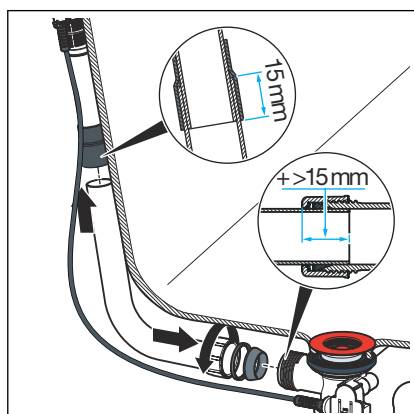
3.2.3 Connecting overflow and drain

Once the overflow and drain have been installed, connect both to the overflow pipe.

Requirements:

- The overflow is mounted in the overflow opening.
- The drain is securely mounted on the base of the bathtub.

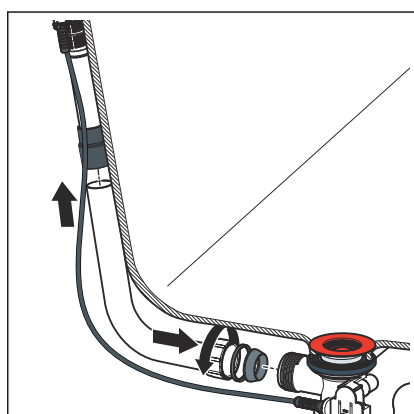
NOTICE! Connections where the pipes are not inserted far enough into each other become leaky. For this reason, maintain a minimum insertion depth of 15 mm for every connection.



- Hold the overflow pipe parallel to the pipe of the overflow unit and mark the points where the drain and overflow are connected.

Minimum insertion depth: 15 mm

- Cut the overflow pipe to the marked length and deburr it.



- Push the top end of the overflow pipe into the rubber sleeve.

Minimum insertion depth: 15 mm

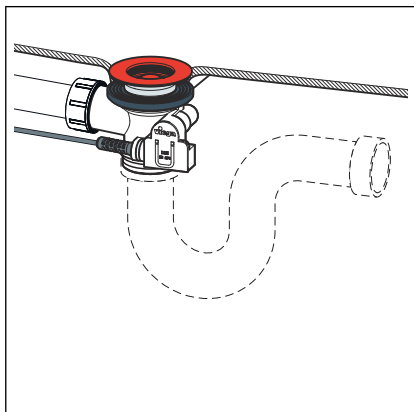
- Push the union nut, sliding ring and seal onto the bottom end of the drain elbow.
- Screw the union nut on the drain unit.

3.2.4 Connecting the wastewater system

The drain unit must be connected to an external odour trap as there is no odour trap integrated into the drain fitting. The drain unit is equipped with a vertical 1½ inch threaded connection for the connection.

Requirements:

- The overflow and drain units are installed on the bathtub.
- The connection between overflow and drain has been made.
- Screw the drain unit together with the on-site odour trap at the threaded connection.

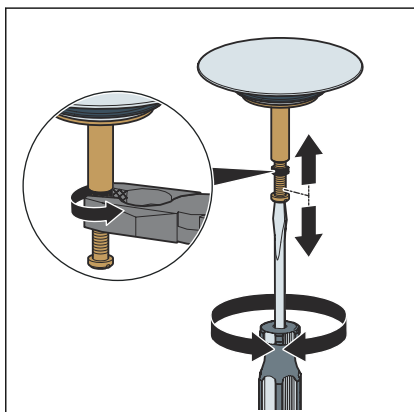
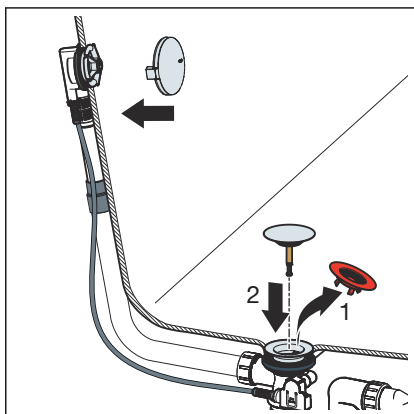


3.2.5 Mounting equipment set

To avoid damaging the rosette and the drain plug, do not install the equipment set until all other work has been completed:

- Align and fit the rotatable rosette.
- Remove the site protection.
- Fit the drain plug.
- To check function and alignment, turn the rotatable rosette.

The opening of the drain plug should be 2–3 cm wide when opened. If necessary, regulate the width of the opening of the drain plug using the adjusting screw (see next step).



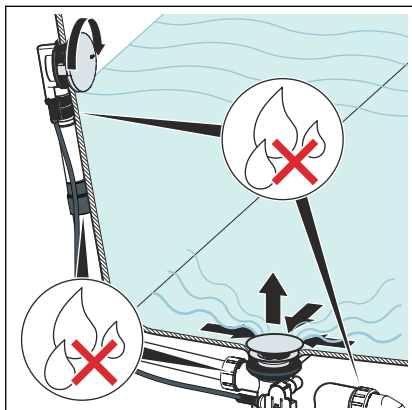
- Set the drain plug with the help of the adjusting screw and counter with the nut.

3.2.6 Leakage test

The leakage test is only carried out as a visual inspection.

Check the points marked in the following drawing.

► Check for visible leaks.

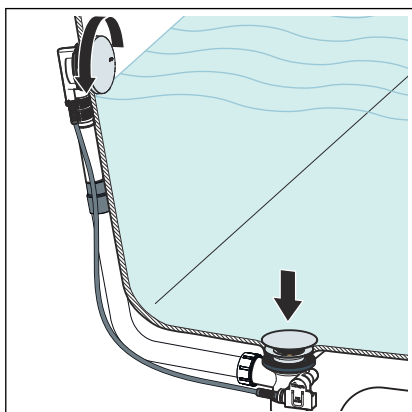


3.3 Use

The drain / overflow are controlled via the rotatable rosette on the overflow. To close or open the drain, proceed as follows:

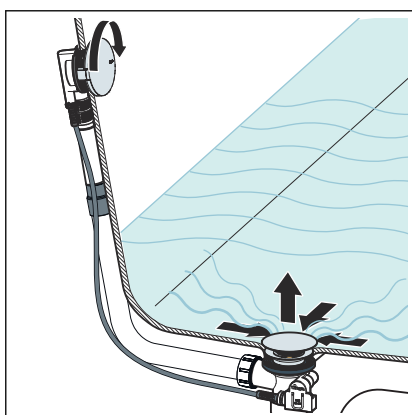
► Turn the rotatable rosette to the left.

◻ The drain closes itself.



► Turn the rotatable rosette to the right.

◻ The drain opens itself.



3.4 Care



NOTICE!

Risk of damage due to unsuitable cleaning agent.

The following cleaning agents can damage chrome-plated surfaces and therefore may not be used:

- scouring agent
- abrasive sponges
- lime, plaster or cement dissolver
- solvents or other acidic cleaning agents

Use normal soap or a mild cleaning agent for regular care and prevention of lime scale on the rotatable rosette and valve cone. Do not use scouring agent or abrasive objects!

Use household cleaner to remove coarse soiling, also around the drain unit and the odour trap. Rinse the detergent thoroughly with clear water after the prescribed exposure time. There should be no residue on the components.

3.5 Disposal

Separate the product and packaging materials (e. g. paper, metal, plastic or non-ferrous metals) and dispose of in accordance with valid national legal requirements.



Viega GmbH & Co. KG
service-technik@viega.de
viega.com

INT • 2025-04 • VPN240270

