

Instructions for Use

Press-in nozzle



for T-pieces of the Profipress, Sanpress and Sanpress Inox systems with branch d15 in customised dimensioned supply lines

Model
2211.5

viega

Table of contents

1	About these instructions for use	3
	1.1 Target groups	3
	1.2 Labelling of notes	3
	1.3 About this translated version	4
2	Product information	5
	2.1 Standards and regulations	5
	2.2 Intended use	5
	2.2.1 Areas of use	5
	2.3 Product description	6
	2.3.1 Overview	6
	2.3.2 Compatible T-pieces	8
3	Handling	10
	3.1 Assembly	10
	3.1.1 Pressing the connection	10
	3.2 Disposal	11

1 About these instructions for use

Trade mark rights exist for this document; for further information, go to viega.com/legal.

1.1 Target groups

The information in this manual is directed at heating and sanitary professionals and trained personnel.

Individuals without the abovementioned training or qualification are not permitted to mount, install and, if required, maintain this product. This restriction does not extend to possible operating instructions.

The installation of Viega products must take place in accordance with the general rules of engineering and the Viega instructions for use.

1.2 Labelling of notes

Warning and advisory texts are set aside from the remainder of the text and are labelled with the relevant pictographs.



DANGER!

This symbol warns of possible life-threatening injury.



WARNING!

This symbol warns of possible serious injury.



CAUTION!

This symbol warns of possible injury.



NOTICE!

This symbol warns of possible damage to property.



This symbol gives additional information and hints.

1.3 About this translated version

This instruction for use contains important information about the choice of product or system, assembly and commissioning as well as intended use and, if required, maintenance measures. The information about the products, their properties and application technology are based on the current standards in Europe (e.g. EN) and/or in Germany (e.g. DIN/DVGW).

Some passages in the text may refer to technical codes in Europe/Germany. These should serve as recommendations in the absence of corresponding national regulations. The relevant national laws, standards, regulations, directives and other technical provisions take priority over the German/European directives specified in this manual: The information herein is not binding for other countries and regions; as said above, they should be understood as a recommendation.

2 Product information

2.1 Standards and regulations

The following standards and regulations apply to Germany / Europe and are provided as a support feature.

Regulations from section: Application areas

Scope / Notice	Regulations applicable in Germany
Specifications for installations inside buildings conveying water for human consumption	DIN 1988-300

2.2 Intended use



Discuss use of the system for application areas and media other than those described with the Viega Service Center.

2.2.1 Areas of use

The use of the press-in nozzle is intended for distribution pipes dimensioned according to requirements in connection with the Viega Profipress, Sanpress, Sanpress Inox or Raxofix press-fit systems.

In combination with a ring system, the press-in nozzle supports the exchange of water in connected, rarely used, branched draw-off points such as for sinks, garden sprinklers or heater filling.

The press-in nozzle is suitable

- for water exchange in branched ring systems to infrequently used draw-off points up to a length of 15 m (guideline).
- for installation between two T-pieces of the Profipress, Sanpress systems or Sanpress Inox with a 15-mm branch.
- for installation in cold water distribution lines (e.g. riser pipe).

The distribution lines must be dimensioned as necessary, in accordance with applicable standards and regulations, see [🔗 'Regulations from section: Application areas' on page 5](#).

2.3 Product description

2.3.1 Overview

Installation situation

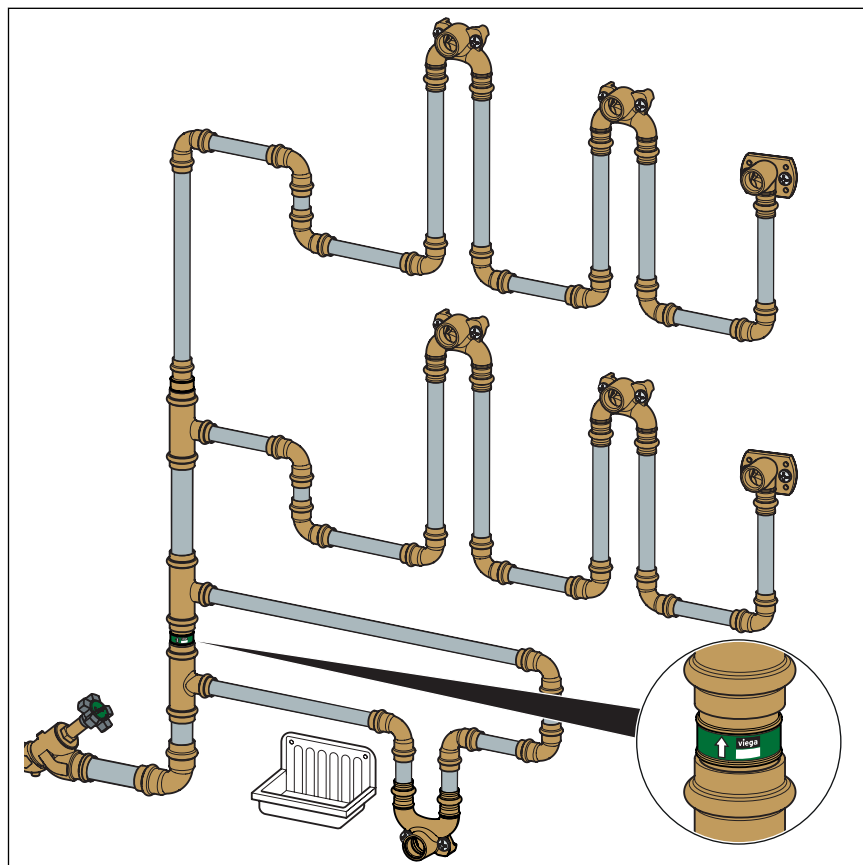


Fig. 1: Press-in nozzle installation situation

Both T-pieces must be connected in a ring system. Double wall plates and/or wall plate T-pieces can be used.

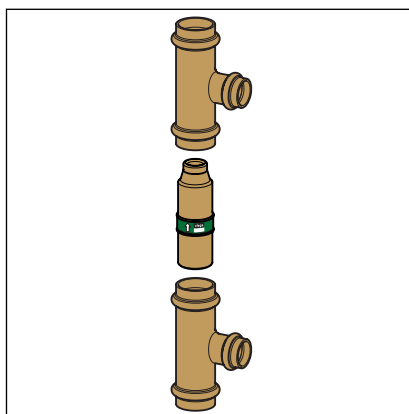


Fig. 2: Press-in nozzle between two T-pieces

Operating mode

The press-in nozzle is installed in **cold water distribution pipes** (e.g. riser pipe) fitted between two T-pieces (Profipress, Sanpress system or Sanpress Inox).

Drinking water taps in the flow direction behind the press-in nozzle move the entire branching ring system volume of the pipe section and exchange the water.

Water draw-offs in the building cause a slight pressure difference in the press-in nozzle. The pressure difference supports the water exchange of the connected ring system.

Technical data

- Material: Gunmetal or silicon bronze
- Plug-in end for press connections
- in acc. with the Venturi principle

The model is available in the following dimensions:

d 22 / 28 / 35 / 42 / 54 / 64

Ring system application limits – Profipress / Sanpress / Sanpress Inox

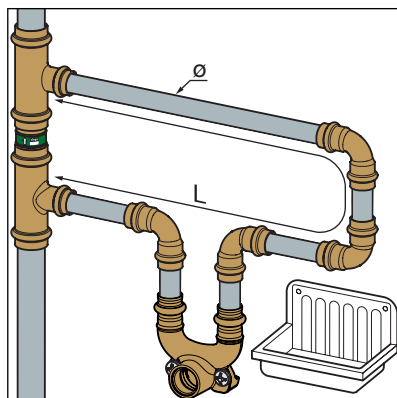


Fig. 3: Profipress / Sanpress / Sanpress Inox ring system

Double wall plates and/or wall plate T-pieces are suitable for the ring system. For $L \leq 15$ m and $\varnothing = 15$ mm, the following maximum quantities are possible:

- Elbows ≤ 10 pc.
 - Profipress: Model 2416
 - Sanpress: Model 2216
 - Sanpress Inox: Model 2316
- Double wall plates ≤ 2 pc.
 - Profipress and Sanpress: Model 2228.7
 - Sanpress Inox: Model 2228.7 and 2325.7
- Wall plate T-pieces ≤ 2 pc.
 - Profipress and Sanpress: Model 2217.3
 - Sanpress Inox: Model 2317.3

Ring system application limits – Raxofix

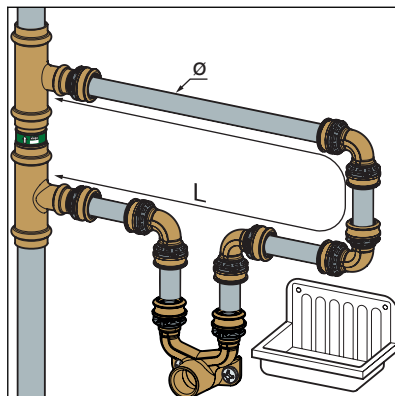


Fig. 4: Raxofix ring system

Double wall plates and/or wall plate T-pieces are suitable for the ring system. For $L \leq 15 \text{ m}$ and $\varnothing = 16 \text{ mm}$, the following maximum quantities are possible:

- Elbows $\leq 10 \text{ pc.}$ (Model 5316)
- Double wall plates $\leq 2 \text{ pc.}$ (Model 5325.7)
- Wall plate T-pieces $\leq 2 \text{ pc.}$ (Model 5325.8)

2.3.2 Compatible T-pieces

Profipress

Art. no.	Ø
292 027	22 x 15 x 22
295 189	28 x 15 x 28
324 865	35 x 15 x 35
324 902	42 x 22 x 42
324 919	54 x 22 x 54
577 735	64 x 35 x 64

Sanpress

Art. no.	Ø
109 165	22 x 15 x 22
283 513	28 x 15 x 28
283 520	35 x 15 x 35
314 224	42 x 15 x 42
195 991	54 x 22 x 54

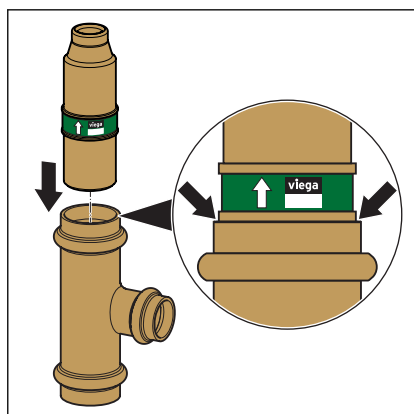
Sanpress Inox

Art. no.	Ø
435 936	22 x 15 x 22
435 950	28 x 15 x 28
435 981	35 x 15 x 35
436 025	42 x 18 x 42
435 844	54 x 22 x 54
578 077	64 x 22 x 64

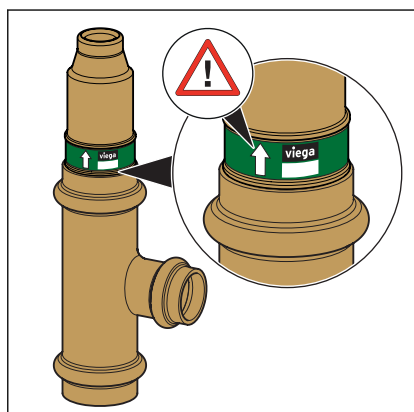
3 Handling

3.1 Assembly

3.1.1 Pressing the connection

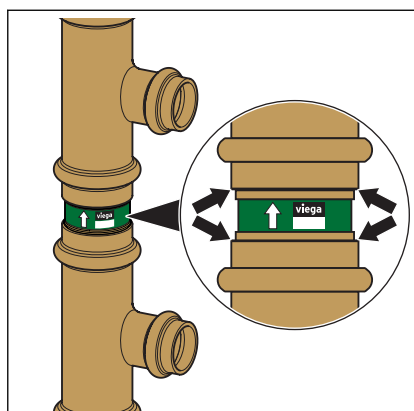


► Push the press-in nozzle into the T-piece up to the stop.



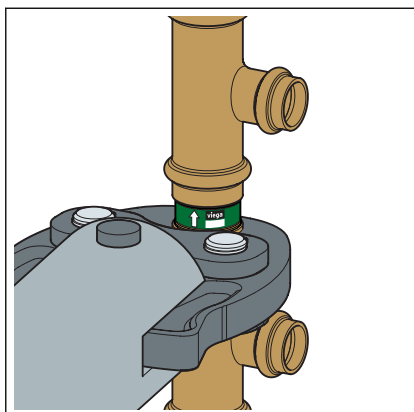
► Check the press-in nozzle is correctly fitted.

NOTICE! Observe the flow direction.



► Mount the second T-piece on the press-in nozzle.

NOTICE! Make sure that the press-in nozzle is mounted as far as it will go.



► Press the two T-pieces, incl. press-in nozzle.

3.2 Disposal

Separate the product and packaging materials (e. g. paper, metal, plastic or non-ferrous metals) and dispose of in accordance with valid national legal requirements.



Viega GmbH & Co. KG
service-technik@viega.de
viega.com

INT • 2021-05 • VPN180327

