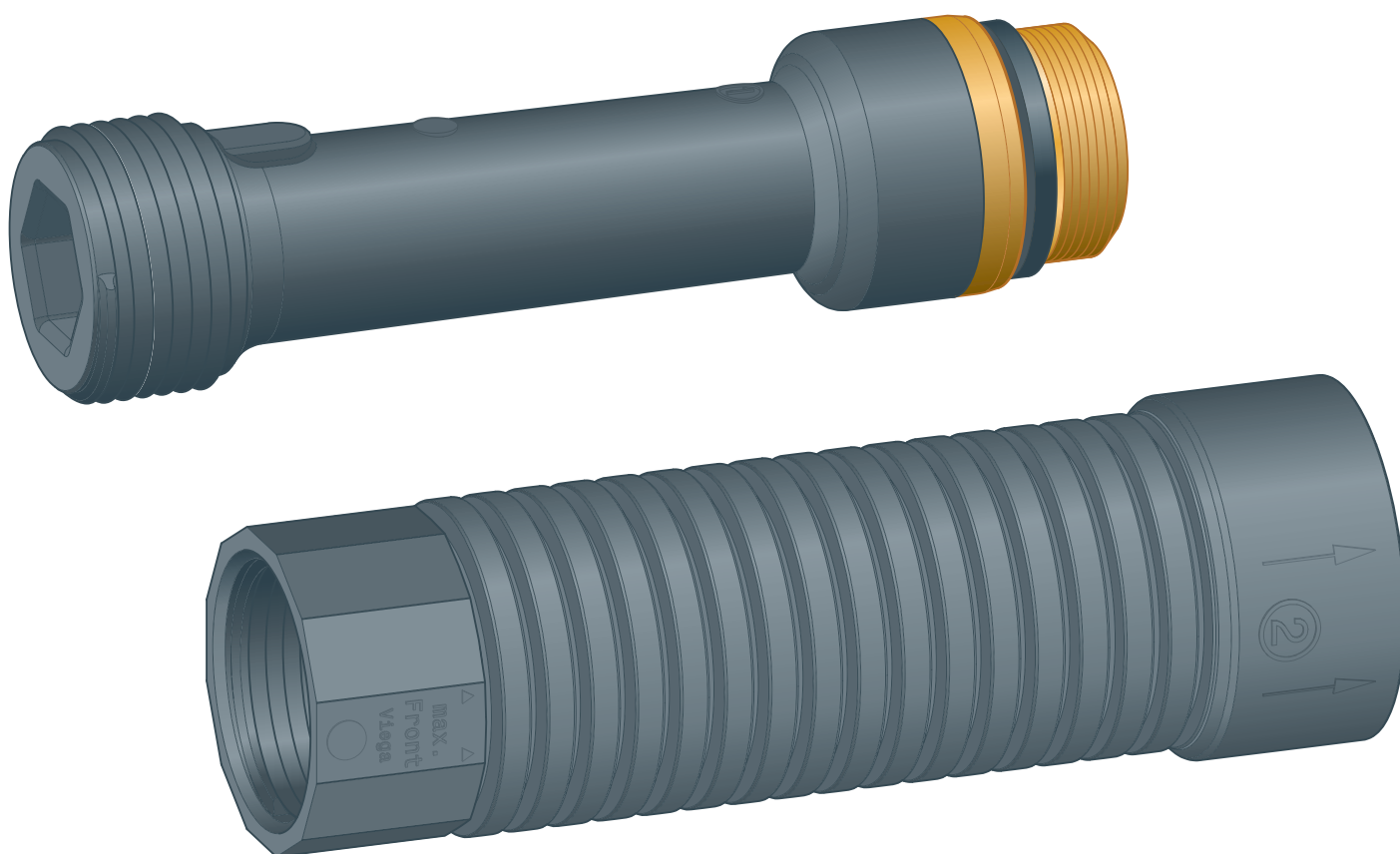


Instructions for Use

Wall plate sealing



for sealing fitting connections according to DIN 18534-3

Model
1500

viega

Table of contents

1	About these instructions for use	3
1.1	Target groups	3
1.2	Labelling of notes	3
1.3	About this translated version	4
2	Product information	5
2.1	Standards and regulations	5
2.2	Intended use	6
2.2.1	Areas of application	6
2.3	Product description	7
2.3.1	Overview	7
2.4	Information for use	7
2.4.1	Chemical resistance	7
2.5	Accessories	7
3	Handling	8
3.1	Transport and storage	8
3.2	Assembly information	8
3.2.1	Mounting instructions	8
3.2.2	Required tools	8
3.3	Assembly	9
3.3.1	Installing the wall plate sealing	9
3.3.2	Leakage test	11
3.4	Disposal	12

1 About these instructions for use

Trade mark rights exist for this document; for further information, go to viega.com/legal.

1.1 Target groups

The information in this manual is directed at heating and sanitary professionals and trained personnel.

Individuals without the abovementioned training or qualification are not permitted to mount, install and, if required, maintain this product. This restriction does not extend to possible operating instructions.

The installation of Viega products must take place in accordance with the general rules of engineering and the Viega instructions for use.

1.2 Labelling of notes

Warning and advisory texts are set aside from the remainder of the text and are labelled with the relevant pictographs.



DANGER!

This symbol warns of possible life-threatening injury.



WARNING!

This symbol warns of possible serious injury.



CAUTION!

This symbol warns of possible injury.



NOTICE!

This symbol warns of possible damage to property.



This symbol gives additional information and hints.

1.3 About this translated version

This instruction for use contains important information about the choice of product or system, assembly and commissioning as well as intended use and, if required, maintenance measures. The information about the products, their properties and application technology are based on the current standards in Europe (e.g. EN) and/or in Germany (e.g. DIN/DVGW).

Some passages in the text may refer to technical codes in Europe/Germany. These should serve as recommendations in the absence of corresponding national regulations. The relevant national laws, standards, regulations, directives and other technical provisions take priority over the German/European directives specified in this manual: The information herein is not binding for other countries and regions; as said above, they should be understood as a recommendation.

2 Product information

2.1 Standards and regulations

The following standards and regulations apply to Germany / Europe and are provided as a support feature.

Regulations from section: Application areas

Scope / Notice	Regulations applicable in Germany
Waterproofing of penetrations of the composite waterproofing system	DIN 18534-3
Areas with water impact class W1-I	DIN 18534-1
Planning, execution, operation and maintenance of potable water installations	DIN EN 1717
Planning, execution, operation and maintenance of potable water installations	DIN 1988
Planning, execution, operation and maintenance of potable water installations	VDI/DVGW 6023
Planning, execution, operation and maintenance of potable water installations	Trinkwasserverordnung (TrinkwV)

Regulations from section: Installing wall plate sealing

Scope / Notice	Regulations applicable in Germany
Creating the composite seal	DIN 18534-3

Regulations from section: Leakage test

Scope / Notice	Regulations applicable in Germany
Test on a system that is finished but not yet covered	DIN EN 806-4
Leakage test for water installations	ZVSHK-Merkblatt: "Dichtheitsprüfungen von Trinkwasserinstallationen mit Druckluft, Inertgas oder Wasser"

2.2 Intended use



Agree the use of the system for areas of application and media other than those described with Viega.

2.2.1 Areas of application

The wall panel seal is suitable for sealing penetrations of the bonded sealing in accordance with applicable guidelines. Use is required in areas with water effect class W1-I, e.g. showers and baths, for applicable guidelines see ↗ 'Regulations from section: Application areas' on page 5.



NOTICE!
Do not use the wall plate sealing for any other purpose.

The installed wall panel seal must not be subjected to mechanical loads.

Potable water installation

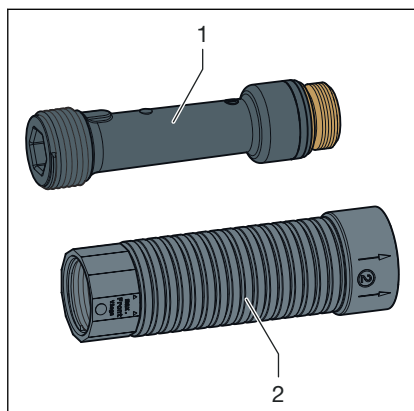
For planning, execution, operation and maintenance of potable water installations, observe the applicable regulations, see ↗ 'Regulations from section: Application areas' on page 5.

Maintenance

Inform your customer or the operator of the potable water installation that the system has to be maintained on a regular basis, see ↗ 'Regulations from section: Application areas' on page 5.

2.3 Product description

2.3.1 Overview

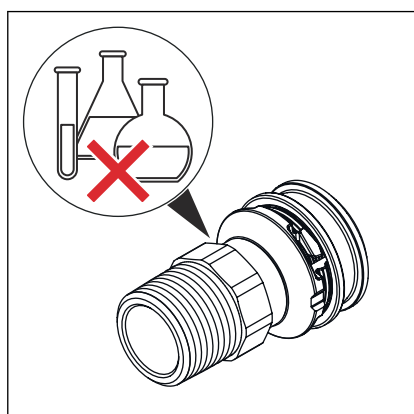


- 1 - Pressure test plug
- 2 - Sealing sleeve

Fig. 1: Overview of wall plate sealing

2.4 Information for use

2.4.1 Chemical resistance



NOTICE!

Damage to material due to aggressive chemicals

Aggressive chemicals, especially those containing solvents, may cause material damage and leaks. This may lead to water damage.

- Prevent contact between the system components and aggressive chemicals.
- Viega recommends using the Viega leak detection spray model 5300 for the leakage test.

2.5 Accessories

The following accessories are available:

Model	Description
1517.1	Pressure test plugs for wall plate sealing
1500	Wall plate sealing starter kit
1517.3	Expansion zone collar

3 Handling

3.1 Transport and storage



Do not remove the components from the packaging until immediately before use.

3.2 Assembly information

3.2.1 Mounting instructions

Checking system components

System components may, in some cases, have become damaged through transportation and storage.

- Check all parts.
- Replace damaged components.
- Do not repair damaged components.
- Contaminated components may not be installed.

3.2.2 Required tools

Plumbing installer

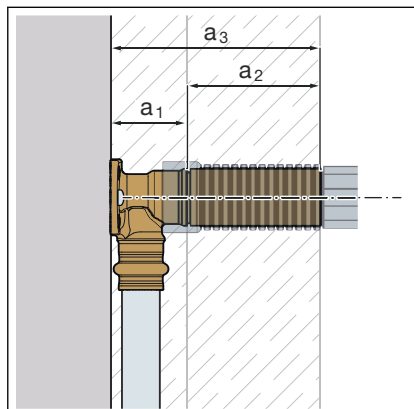
- Suitable cutting tool
- Radiator spud wrench or sanitary wrench

Tile setter

- 35 mm hole cutter (recommended)

3.3 Assembly

Note installation length

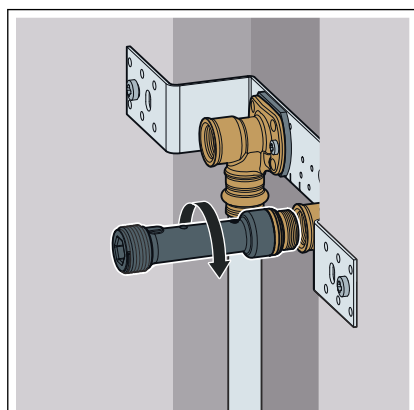


- The overall thickness of the wall depends on the wall plate used. A maximum extension of 70 mm is possible with a tap extension.
- a_1 : Wall plate, upper edge of Rp-thread
- a_2 : tap extension
- a_3 : maximum wall construction thickness $a_1 + a_2$

3.3.1 Installing the wall plate sealing


Work steps for installers of sanitary fittings or pipe fitters

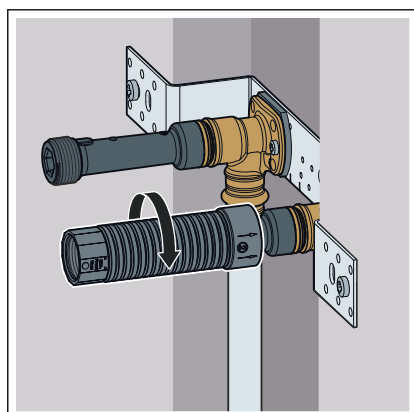
The wall plate is fixed and connected to the potable water installation. When using an insulating shell for the wall disc, the washer of the insulating shell is mounted under the wall plate.



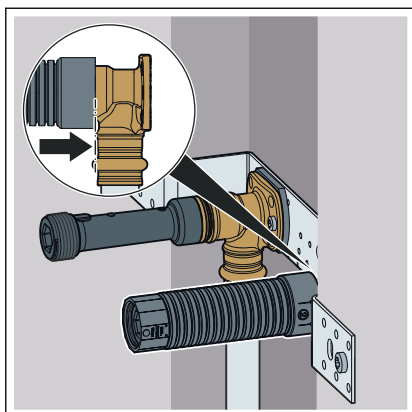
- Screw the push-off plug into the wall plate.

NOTICE! When using the push-off plug model 1517.1, check the gasket and replace if damaged or soiled.

- After installing the push-off plug, carry out the leakage test, see  **Chapter 3.3.2 'Leakage test' on page 11.**



- Screw the sealing sleeve over the push-off plug on to the wall plate.



NOTICE! Screw on the sealing sleeve until the sealing sleeve makes contact with the pipe lead-in on the wall plate. The sealing sleeve must be securely seated on the wall plate.

INFO! To form a correct seal when using long wall plates, only screw on the push-off plug until it is flush with the sealing sleeve; it does not have to be screwed on as far as the pipe lead-in.



Note for installers of sanitary fittings

Hand over these instructions to the subsequent trades.

Work steps for tilers, plasterers or drywall builders




The wall plate sealing is suitable for installation under cladding and for wet installation.

The diameter of the drill holes in the cladding should ideally be 35 mm.

For wet installation, plaster the wall plate and the sealing sleeve until flush with the surface.

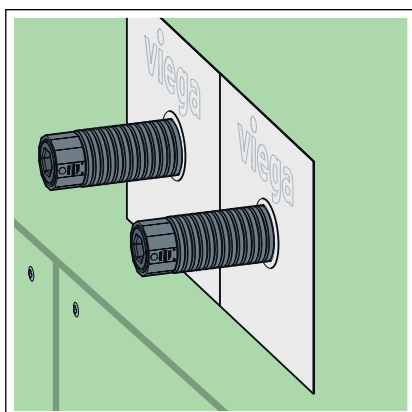
Use a suitable expansion zone collar with an external diameter of 32 mm. Viega recommends using the expansion zone collar model 1517.3.

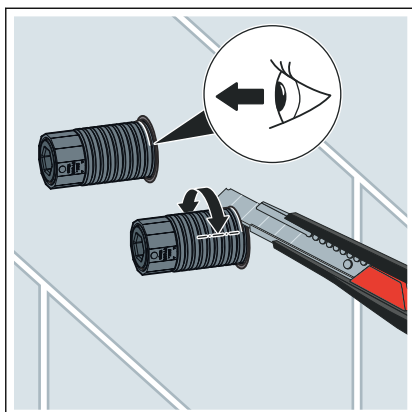
NOTICE! When applying the bonded sealing, follow the manufacturer's instructions and applicable guidelines, see  'Regulations from section: Installing wall plate sealing' on page 5.

- After applying the first wall covering, attach the expansion zone collar and seal with the bonded sealing in accordance with the manufacturer's instructions.

The sealing collar must be suitable for the Viega wall plate sealing with an external diameter of 32 mm.

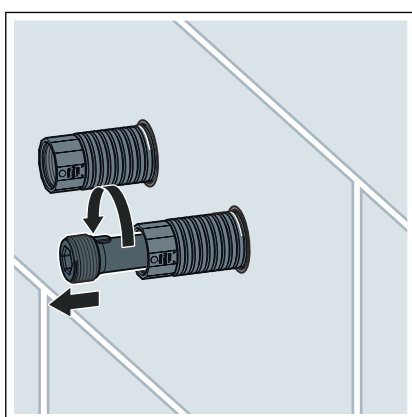
- Apply the top wall covering.



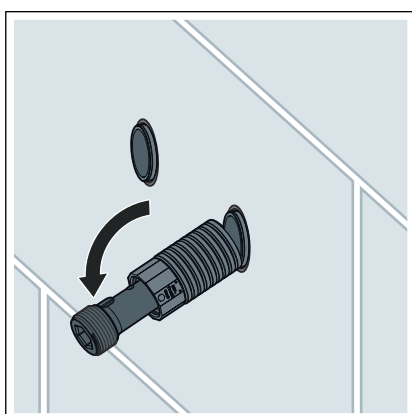


- After applying the wall covering, cut the sealing sleeve with a sharp knife at the height of the wall covering.

INFO! To crop the sealing sleeve at the height of one of the first four grooves, cut into it all the way round; from the fourth groove onwards, it is sufficient to make an incision at separate points on the circumference.



- Loosen the push-off plug with a sanitary cross wrench, a radiator spud wrench or a hexagon spanner.



- Break off the sealing sleeve at the point where the incision has been made with the assistance of the push-off plug.

3.3.2 Leakage test



NOTICE!

Also refer to the information for use in [Chapter 2.4.1](#) 'Chemical resistance' on page 7.

The installer must perform a leakage test before commissioning.

Carry out this test on a system that is finished but not covered yet.

Observe the applicable regulations, see ↗ *'Regulations from section: Leakage test' on page 6.*

The leakage test pursuant to the applicable regulations must also be carried out for non-potable water installations, see ↗ *'Regulations from section: Leakage test' on page 6.*

Document the result.

3.4 Disposal

Separate the product and packaging materials (e. g. paper, metal, plastic or non-ferrous metals) and dispose of in accordance with valid national legal requirements.



Viega GmbH & Co. KG
service-technik@viega.de
viega.com

INT • 2026-01 • VPN210700

