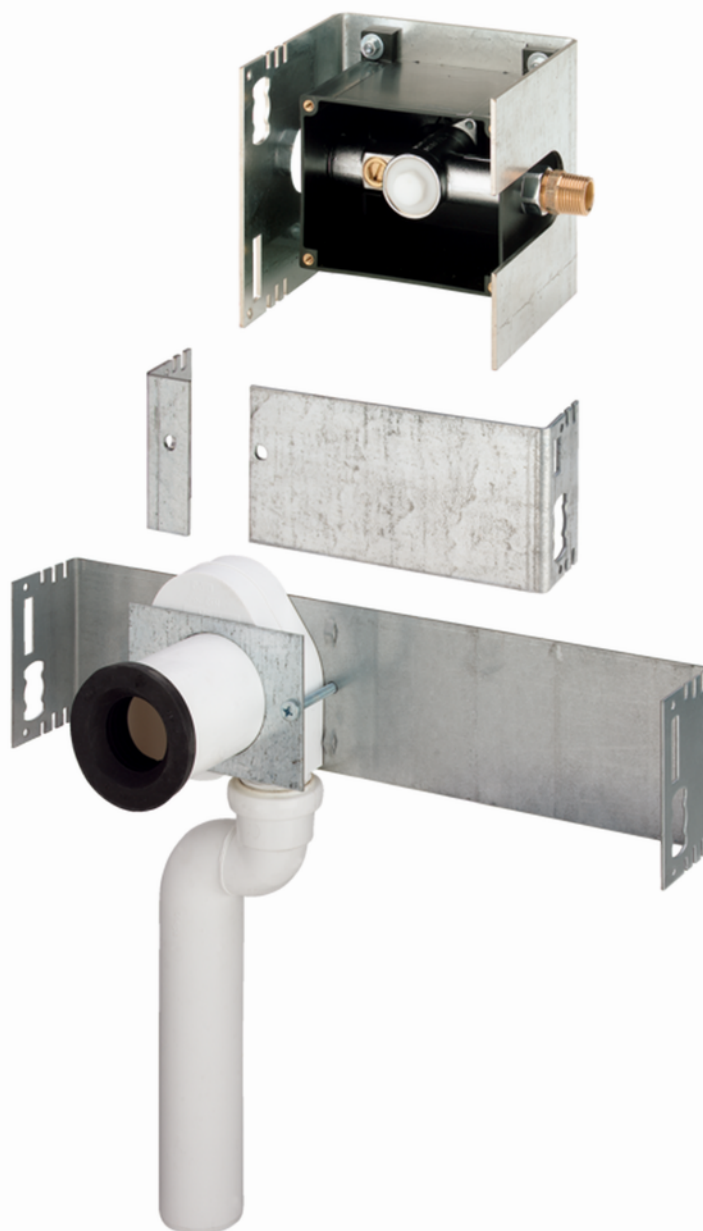


## Urinal module

# Instructions for Use



for "Joly" and "Visit" (Keramag) urinal, connection of the Visign equipment set (manual and touchless flush actuation)

**Model**  
8127.3

**Year built:**  
from 03/2009

en\_INT

**viega**



# Table of contents

|          |   |          |
|----------|---|----------|
| <b>1</b> | <b>About these instructions for use</b> | <b>4</b> |
| 1.1      | Target groups                           | 4        |
| 1.2      | Labelling of notes                      | 4        |
| 1.3      | About this translated version           | 5        |
| <b>2</b> | <b>Product information</b>              | <b>6</b> |
| 2.1      | Standards and regulations               | 6        |
| 2.2      | Intended use                            | 6        |
| 2.2.1    | Areas of use                            | 6        |
| 2.3      | Product description                     | 7        |
| 2.3.1    | Overview                                | 7        |
| 2.3.2    | Compatible components                   | 7        |
| 2.3.3    | Sound protection                        | 8        |
| 2.3.4    | Technical data                          | 8        |
| <b>3</b> | <b>Handling</b>                         | <b>9</b> |
| 3.1      | Assembly information                    | 9        |
| 3.1.1    | Mounting conditions                     | 9        |
| 3.1.2    | Required tools                          | 9        |
| 3.2      | Assembly                                | 9        |
| 3.2.1    | Mounting module                         | 9        |
| 3.2.2    | Rounding off jobs                       | 15       |
| 3.3      | Disposal                                | 15       |

# 1 About these instructions for use

Trade mark rights exist for this document, further information can be found at [viega.com/legal](http://viega.com/legal).

## 1.1 Target groups

The information in this instruction manual is directed at the following groups of people:

- Heating and sanitary professionals and trained personnel

It is not permitted for individuals without the abovementioned training or qualification to mount, install and, if required, maintain this product. This restriction does not extend to possible operating instructions.

The installation of Viega products must take place in accordance with the general rules of engineering and the Viega instructions for use.

## 1.2 Labelling of notes

Warning and advisory texts are set aside from the remainder of the text and are labelled with the relevant pictographs.



### **DANGER!**

This symbol warns against possible life-threatening injury.



### **WARNING!**

This symbol warns against possible serious injury.



### **CAUTION!**

This symbol warns against possible injury.



### **NOTICE!**

This symbol warns against possible damage to property.



*Notes give you additional helpful tips.*

### **1.3 About this translated version**

This instruction for use contains important information about the choice of product or system, assembly and commissioning as well as intended use and, if required, maintenance measures. The information about the products, their properties and application technology are based on the current standards in Europe (e. g. EN) and/or in Germany (e. g. DIN/DVGW).

Some passages in the text may refer to technical codes in Europe/Germany. These should serve as recommendations in the absence of corresponding national regulations. The relevant national laws, standards, regulations, directives and other technical provisions take priority over the German/European directives specified in this manual: The information herein is not binding for other countries and regions; as said above, they should be understood as a recommendation.

## 2 Product information

### 2.1 Standards and regulations

The following standards and regulations apply to Germany / Europe. National regulations can be found on the relevant web site of your country at [viega.com/standards](http://viega.com/standards).

#### Regulations from section: Sound protection

| Scope / Notice                          | Regulations applicable in Germany |
|---|-----------------------------------|
| Fulfilled noise protection requirements | DIN 4109                          |
| Fulfilled noise protection requirements | DIN 4109 (additional sheet 2)     |
| Fulfilled noise protection requirements | VDI 4100 SSt I-SSt II             |

### 2.2 Intended use

#### 2.2.1 Areas of use

The urinal module is designed for mounting in a Steptec pre-wall construction.

## 2.3 Product description

### 2.3.1 Overview

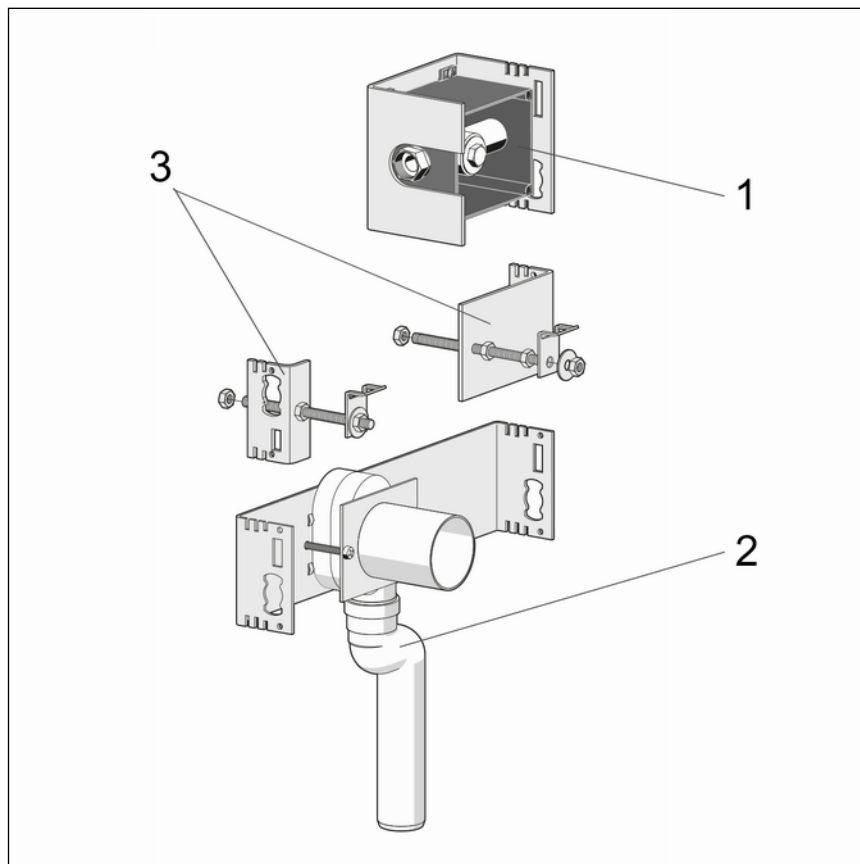


Fig. 1: Components

- 1 - urinal installation set
- 2 - suction moulded piece
- 3 - connection for Keramag "Joly" and "Visit"

### 2.3.2 Compatible components

The urinal module is compatible with the urinals "Joly" and "Visit" by Keramag.

#### Compatible flush plates

| Product          | Name                            | Model  |
|------------------|---------------------------------|--------|
| Visign for Style | Flush plate Visign for Style 10 | 8315.2 |
|                  | Flush plate Visign for Style 11 | 8331.2 |
|                  | Flush plate Visign for Style 12 | 8332.2 |

| Product           | Name                               | Model   |
|-------------------|------------------------------------|---------|
|                   | Flush plate Visign for Style 13    | 8333.2  |
|                   | Flush plate Visign for Style 14    | 8334.2  |
| Visign for More   | Flush plate Visign for More 100    | 8352.2  |
|                   | Flush plate Visign for More 102    | 8353.2  |
|                   | Flush plate Visign for More 103    | 8355.2  |
|                   | Flush plate Visign for More 104    | 8354.2  |
| Visign for Public | Flush plate Visign for Public      | 8326.2  |
|                   | Remote actuation Visign for Public | 8326.55 |
|                   | Remote actuation Visign for Public | 8326.65 |
|                   | Cover plate Visign for Public      | 8326.7  |

### 2.3.3 Sound protection

The urinal module complies with the noise insulation requirements specified in section 5.1 „Regulations from section: Sound protection“ on page 6.

### 2.3.4 Technical data

The product has the following technical data:

|  |   |
|--|---|
| drain elbow  | DN 50   |
| Fitting connection   | Rp ½  |
| Maximum height of urinal inlet from upper edge of the finished floor | <ul style="list-style-type: none"> <li>■ with basic element construction height 1130 = 880 mm</li> <li>■ with basic element construction height 1370 = 1120 mm</li> </ul> |



## 3 Handling

### 3.1 Assembly information

#### 3.1.1 Mounting conditions

##### Construction height

With the construction height, the marked height of the upper edge of the finished floor must be observed.

##### Actuation

The actuation takes place via manual flush actuation, connection of the Visign equipment set.

#### 3.1.2 Required tools

The following tools are required for mounting the urinal module:

- fork or ring spanner: 17 mm / 19 mm
- Phillips-tip screwdriver

### 3.2 Assembly

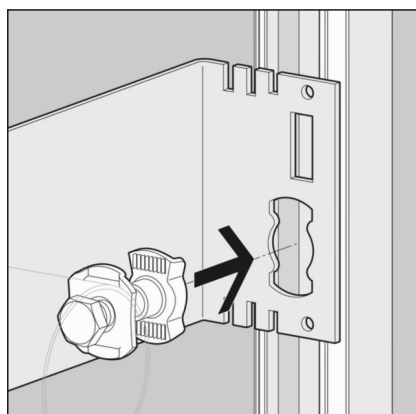
#### 3.2.1 Mounting module

##### Mounting in Steptec

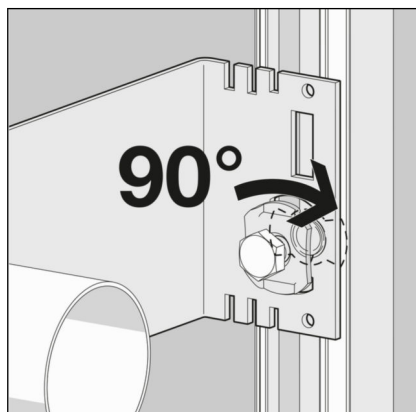


*The two vertical rails, which surround the module, must be open towards the module and be at an interval of 430 mm.*

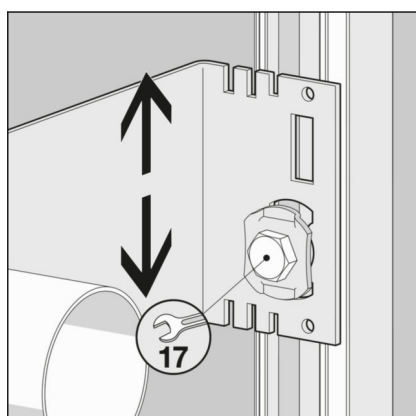
##### Securing module



- Secure the module onto the open Steptec rail with the slot nuts supplied:
- Insert the slot nut into the opening of the module.

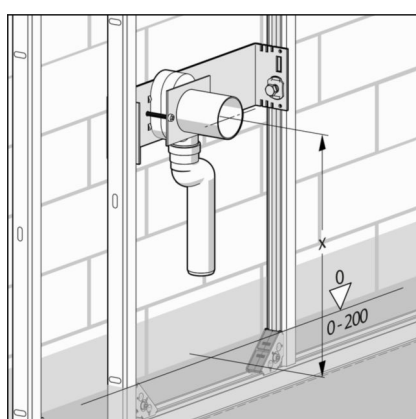


- Push the slot nut in slightly.
- Turn by 90°.
  - ⇒ The slot nut is secured in the Steptec rail.

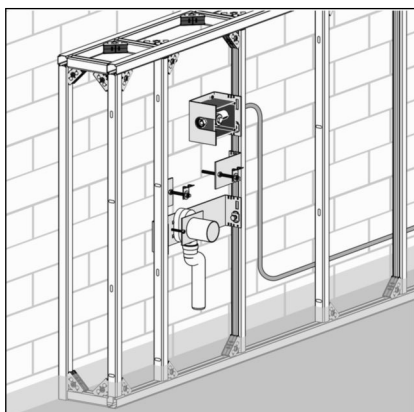


- Align the height of the module.
- Tighten the slot nut with a ring spanner (SW 17).

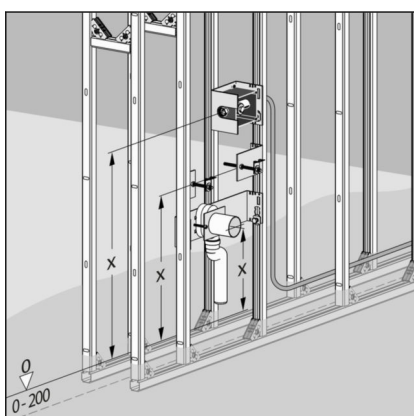
- Tighten the other slot nuts in the same way.
  - ⇒ The module is secured on the rail framework.



- Set desired height for the bracket of the drain elbow (X). When doing so, observe the upper edge of the finished floor.



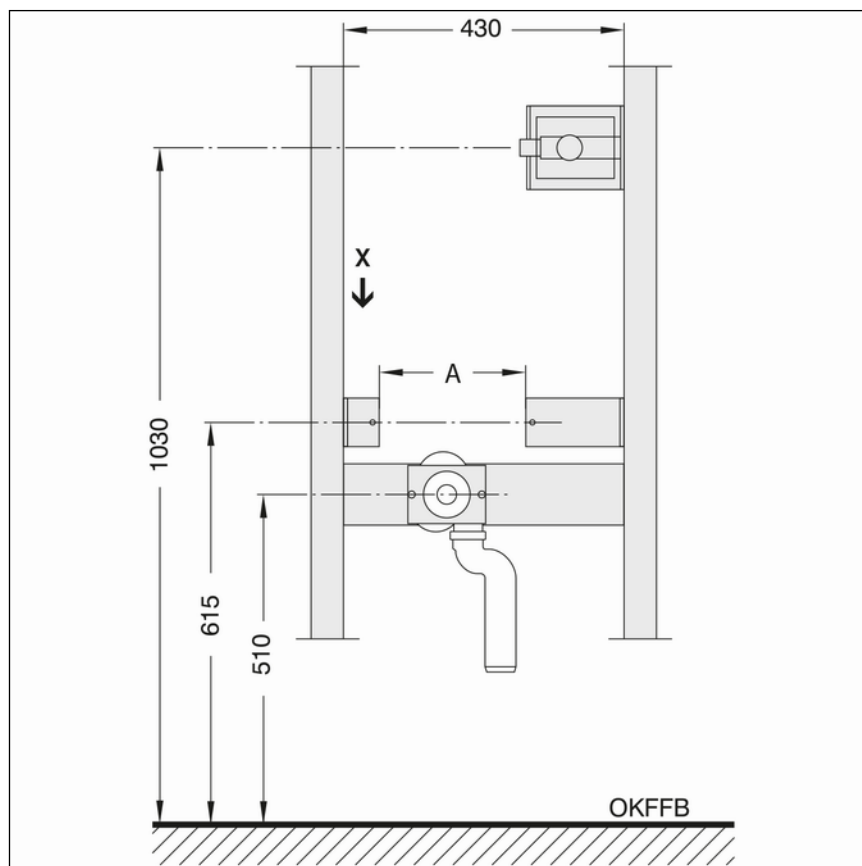
► Make water connection.



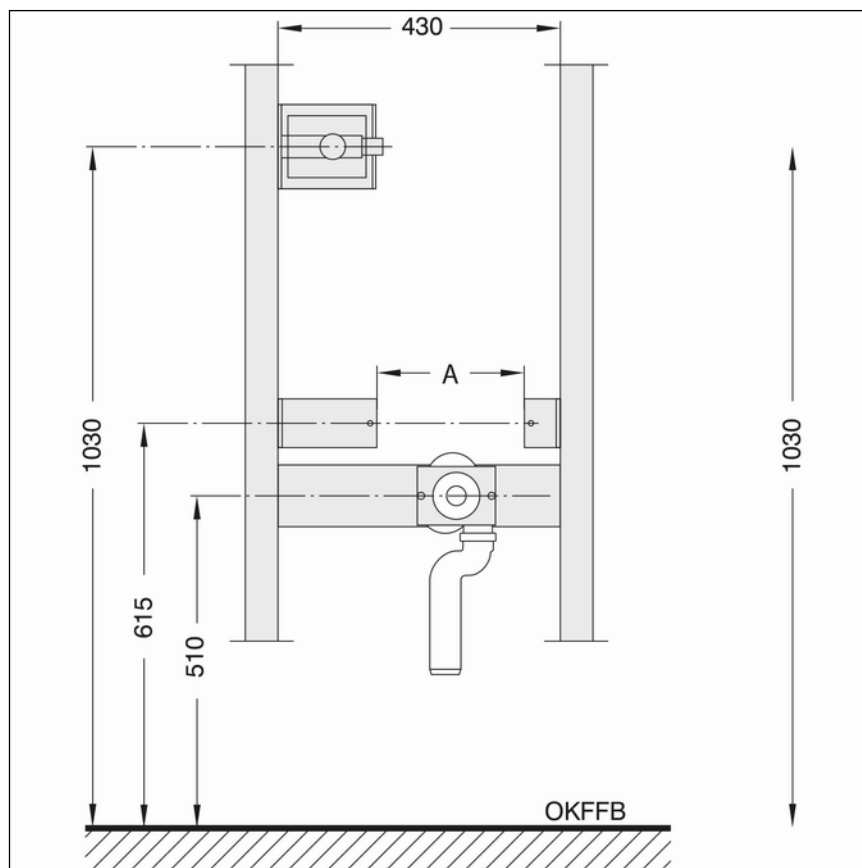
► Check height settings.

In addition, observe the following details.

**Keramag 'Joly'**

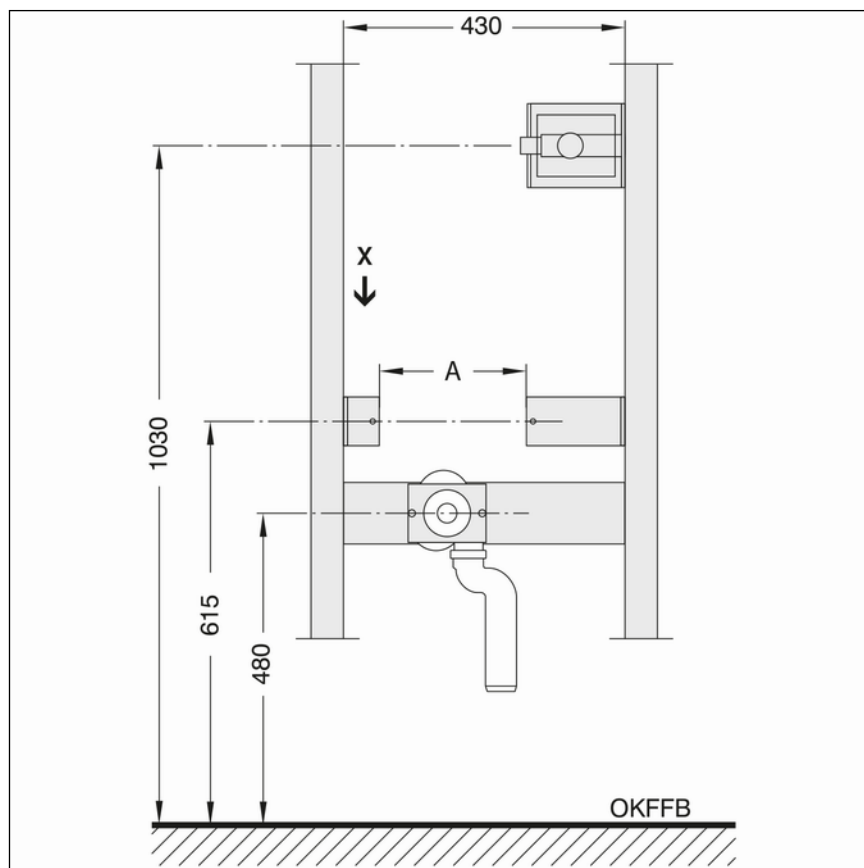


A - The size results from

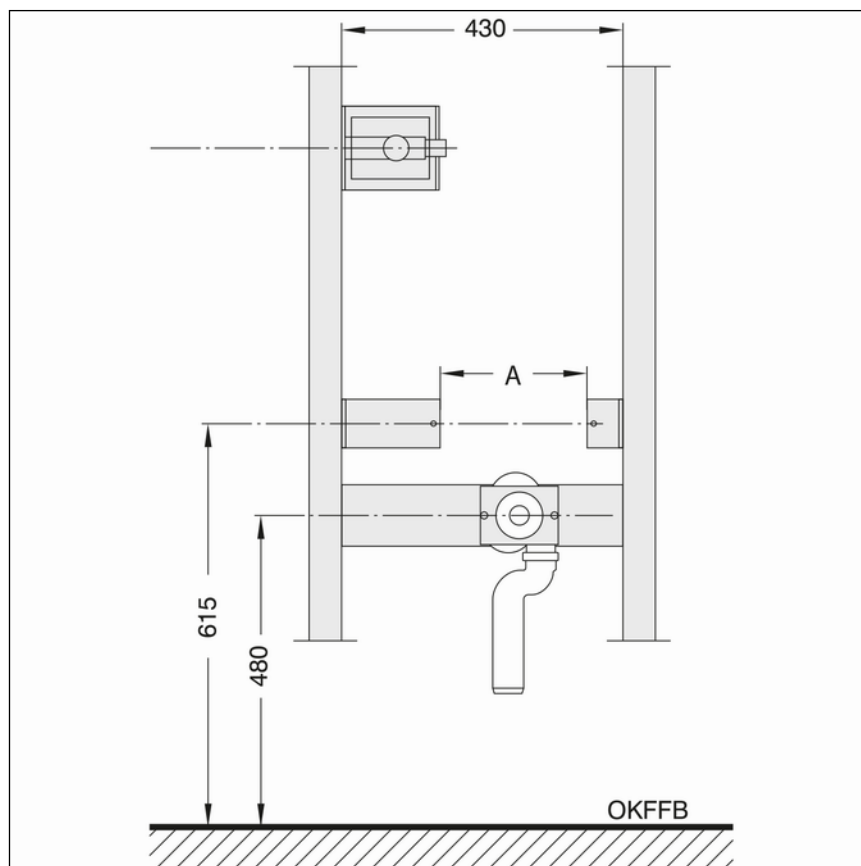


A - The size results from

**Keramag 'Visit'**

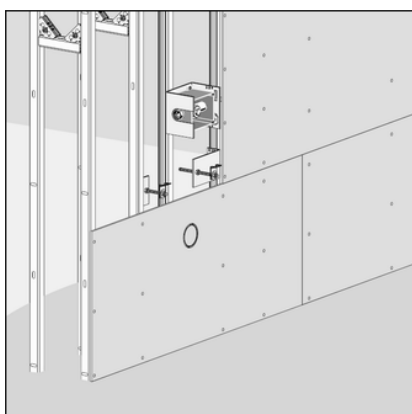


A - The size results from



A - The size results from

### 3.2.2 Rounding off jobs



- Single clad pre-wall: Clad with 12.5 mm wide IFGP or 12 mm wide Aqua-KS cladding panels.

When doing so, make sure that no abutting edges converge.

- Grout the abutting edges and joints with a suitable filler.
- Observe the instruction manual for the cladding panels for more information.

### 3.3 Disposal

Separate the product and packaging materials (e. g. paper, metal, plastic or non-ferrous metals) and dispose of in accordance with valid national legal requirements.